

# Excel By 5

North Madison County

## Resource Manual



# **EMERGENCY ACCESS**

**Call 911**

## **City of Canton**

Mayor's Office 601.859.5822  
Parks & Recreation 601.859.4358  
City of Canton Police Department 601.859.2121  
Fire Department 601.859.3112  
Library 601.859.3202

## **City of Flora**

Mayor's Office 601.879.8686  
Fire Department 601.879.9262  
City of Flora Police Department 601.879.8871 Fax: 601.879.3630  
Library 601.879.8835  
City Hall 601.879.8686

## **Madison County Sheriff**

2941 S. Liberty St.  
Canton, MS 39046  
Phone: 601.859.2345

# TABLE OF CONTENT

Emergency Access .....	1
Table of Contents.....	2
Associations & Foundations.....	3
Childcare Assistance.....	4
Daycare Centers.....	5-7
Early Childhood Education/Employment Services.....	8
Head Start Centers/Friends of Children.....	9
Housing..... 10	
Legal Services.....	11
Libraries..... ..12	
Medical Providers & Health Services.....	13-14
Mentoring Program .....	15
Miscellaneous..... -17	16

Schools.....	1
8-20	
Social Services Agencies	
.....	21-22
Special Needs	
Students.....	23
Tobacco.....	
.....	24
Tutoring.....	
.....	25
United	
Way.....	26

## **Associations and Foundations**

### **American Heart Association**

4830 McWillie Circle, Jackson, MS 39206  
601.321.1200-----601.321.1201 (fax)

### **Arthritis Foundation**

P.O. Box 7669, Atlanta, GA 30357  
1.800.283.7800

### **Diabetes Foundation of MS**

800 Avery Blvd. Ste. 100, Ridgeland, MS 39157  
601.957.7878

### **Jackson Heart Study**

Jackson Medical Mall  
350 W. Woodrow Wilson Ave., Ste. 701 Jackson, MS 39201  
601.979.8700-----601.979.8701 (fax)

### **Madison County Union for Progress**

270 W. Peace St., Canton, MS 39046  
601.859.6280

**MS Health Care Association**  
303 Brame Rd., Ridgeland, MS 39157  
601.898.8320

**MS Hospital Association**  
116 Woodgreen PL, Madison, MS 39110  
1.800.289.8884-----601.368.3200 (fax)

**MS Kidney Foundation**  
3000 Old Canton Rd. Ste 110, Jackson, MS 39216  
601.981.3611-----1.800.232.1592

## **Childcare Assistance**

**Central Mississippi Planning and Development District**  
**Mississippi Department of Human Services**  
Michael Monk – Chief Executive Director  
P.O. Box 4935  
Jackson, MS 39296  
Phone: 601.981.1511 Fax: 601.981.1515

# Daycare Centers

## Flora

Name	Capacity
<b>BIG SCHOOL PRE-K EDUCATIONAL LEARNING CENTER</b> 251 Kearney Park Road-suite B Flora, MS 39071 (601) 897-3999	42
<b>FLORA UMC WEEKDAY MINISTRIES</b> 142 Carter Street Flora, MS 39071 (601) 879-9500	50

## Canton

Name	Capacity
<b>AGAPE EDUCATIONAL CENTER</b> 315 Garrett St. Canton, MS 39046 (601) 859-8868	86
<b>BELL'S EDUCARE TUTORIAL &amp; LEARNING CENTER</b> 141 Ragsdale Rd. Canton, MS 39046 (601) 859-7563	30
<b>BUILDING BLOCKS DAYCARE &amp; LEARNING CENTER, INC.</b>	128

243 Yandell Road Canton, MS 39046 (601) 605-2527	
<b>BUILDING BLOCKS OF MADISON CROSSING AFTERSCHOOL</b> 243 Yandell Road Canton, MS 39046 (601) 605-2527	90
<b>EAGLE'S NEST EARLY CHILDHOOD LEARNING CTR</b> 802 West Fulton St. Canton, MS 39046 (601) 855-0509	60
<b>GREATER REFUGE TEMPLE</b> 375 Morgan Road Canton, MS 39046 (601) 859-9483	69
<b>JOHNSON'S NURSERY SCHOOL</b> 613 Coleman Street Canton, MS 39046 (601) 859-8524	30

# Daycare Centers

Name	Capacity
<b>LITTLE MIRACLES EARLY CHILDHOOD LEARNING CENTER</b> 929 North Liberty Street Canton, MS 39046 (601) 601.859.0033	37
<b>MOTHER'S LOVE LEARNING CENTER</b> 2015 Hwy 43 North Canton, MS 39046 (601) 859-8080	78
<b>MOTHER TERESA'S DAY CARE</b> 1493 Hwy 17 Camden, MS 39045 (602) 813-1226	37
<b>OVER THE RAINBOW</b> 212 South Union Street Canton, MS 39046 (601) 859-7224	176
<b>SACRED HEART FAMILY CENTER</b> 1493 Hwy 17 Camden, MS 39045 (662) 468-2354 www.sacredheartcamden.com	37
<b>THE CHRISTIAN LEARNING CENTER, INC.</b> 1278 North Old Canton Road Canton, MS 39046 (601) 853-2695	20

**WIN JOB CENTER**

152 Watford Parkway Drive  
Canton, MS 39046  
(601) 859-7609

18

# Early Childhood Education

## Excel By 5

Early Childhood Institute  
Mississippi State University  
109 Executive Dr. Ste. 1  
Madison, MS 39110  
Phone: 601.707.7726  
Website: [www.excelby5.com](http://www.excelby5.com)



# Employment Services

## WIN Job Center

P.O. Box 450  
152 Watford Parkway Drive  
Canton, MS 39046  
Phone: 601.859.7609  
Website: [www.mdes.ms.gov](http://www.mdes.ms.gov)

## Head Start Centers/Friends of Children



Name	Capacity
<b>Devine, Chinn, Garrett HS/EHS Center</b> 454 Trollo St Canton MS 39046 (601) 859-2720	350
<b>Dr. Marvin Hogan HS/EHS Center</b> 4667 Hwy 22 Flora MS 39071 (601) 879-3469	90

# Housing

**Canton Housing Authority**  
 120 Faith Lane, Canton, MS  
 Mr. Stan Beasley  
 601.859.4032

**HUD – Housing & Urban Development**  
 Dr. A.H. McCoy Federal Building  
 100 W. Capitol St. Ste. 910 Jackson, MS 39269  
 601.956.4757

**FLORA**  
**Pine Garden**  
 264 Bannerman Dr.  
 Flora, MS 39071  
 662.879.8463

## CANTON

**Canton Family Unit**

390-A Rick Dr.

601.859.4180

**Joe Prichard Homes**

349 Welch St.  
601.859.4032

**Pat Doherty**

201 Dobson Ave  
601.859.4032

**Lula B. Covington Apt.**

1101 Holmes Ave.

601.859.8300

**Canton Garden Apt.**

619 Martin Luther King Dr.  
601.859.3997

**Canton Estate**

388 Ricks Dr.  
601.859.7014

# Legal Services

## Legal Line

Hotline: 800.498.1804

## Mississippi Center for Legal Services

414 South State St. 3<sup>rd</sup> Floor

Jackson, MS 39205

Phone: 601.948.6752

Website: [www.mslegalservices.org](http://www.mslegalservices.org)

# Libraries

## **Canton Public Library**

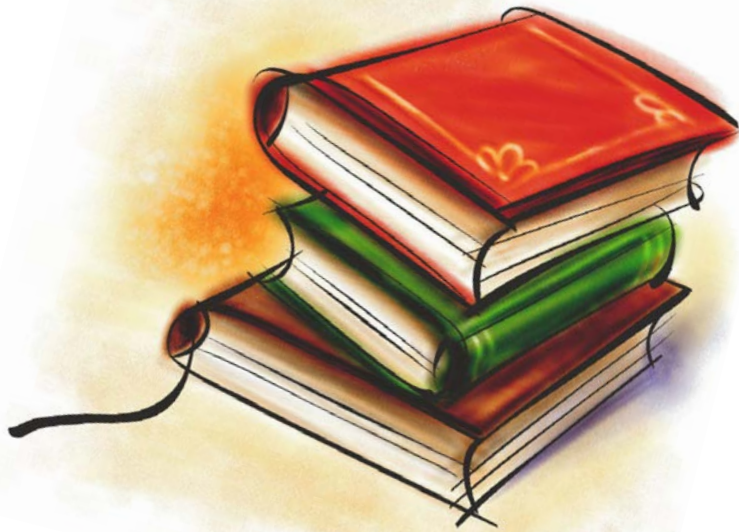
102 Priestley St.  
Canton, MS 39046  
601.859.3202

## **Camden Public Library**

116 Parkside Ave.  
Camden, MS 39045  
662.468.0309

## **Flora Public Library**

168 Carter St. #C  
Flora, MS 39071  
601.879.8835



# Medical Providers and Health Services

## **Canton Family Clinic**

120 E. Academy St. Canton, MS 39046  
601.859.2611

### *Services Provided:*

- *Internal Medicine*
- *Family Practice*



## **CHIP (Children's Health Insurance Plan) Mississippi Division of Medicaid**

Phone: 1.877.543.7669  
Website: www.mdhs.ms.gov

## **Dr. L. C. Tennin Clinic**

122 E. Academy St. Canton, MS 39046  
601.859.8992

### *Services Provided:*

- *Internal Medicine*
- *Family Practice*

## **EPSDT (Early and Periodic Screening, Diagnosis and Treatment Program) Cool Kids Program**

Madison County Health Department  
309 Park Drive  
Canton, MS 39046  
Phone: 601.859.3316

## **Merit Health Family Physicians**

740 Hwy 49 Flora, MS 39071  
601.879.8882

### *Services Provided:*

- *Family Practice*

## **GA Carmichael Family Health**

1668 W. Peace St., Canton, MS 39046  
601.859.5213

### *Services Provided:*

- *Family Practice*
- *Pediatric Medicine*
- *Adolescent Medicine*

## **Madison-Canton Medical Center**

1171 Hart St. Canton, MS 39046  
601.859.9888- Website: www.msdh.state.ms.us

### *Services Provided:*

- *Internal Medicine*
- *Family Practice*
- *Emergency Medicine*

## **Madison County Health Department**

317 N. Union St., Canton, MS 39046  
601.859.3316

### *Services Provided:*

- *Immunizations*
- *Family Planning*
- *Maternity Services*

## **Merit Health Family Physicians**

161 River Oaks Dr. Canton, MS 39046  
601.855.4000

### *Services Provided:*

- *Women's Services*
- *Emergency Department*
- *Surgical Services*

## **Mallory Women Health Center**

276 Nissan Pkwy, Bldg. C, Ste. 100 Canton, MS  
39046  
601.855.5275

### *Services Provided:*

- *Obstetricians*
- *Gynecologists*

## **MEA Medical Clinic**

112 Nissan Dr. Canton, MS 39046  
601.859.8550

### *Services Provided:*

- *Occupational*
- *Ambulatory Care*
- *Primary Care*

## **MSU Cares**

**Insects in the Home**  
www.msucares.com

# Medical Providers and Health Services (Cont.)

## **Region 8 Mental Health Services**

103 South Lake Circle, Canton, MS 39046  
601.859.8371-----601.859.5433 (Fax)

### *Services Provided:*

- *Elderly Enhancement Program*
- *Developmental Disabilities Services*
- *Employee Assistance Program*

## **Senior Life Solutions**

1320 Peace Street, Canton, MS 39046  
601.613.7122 –601.859.8667 (Fax)

### *Services Provided:*

- *Family Therapy*
- *Group Therapy*
- *Stress Management*

156 River Oaks Dr.  
Canton, MS 39046  
601.855.5287

### *Services Provided*

- *Pediatric Medicine*
- *Adolescent Medicine*

## **U-First Medical Clinic**

3726 S. Liberty Clinic  
Canton, MS 39046  
601.407.1134

## **WIC (Women, Infant and Children's Nutrition Program)**

### **Madison County Health Department**

1111 West Peace Street  
Canton, MS 39046  
601.859.1717

Website: [www.mdhs.ms.gov](http://www.mdhs.ms.gov)

## **Sunshine Medical Clinic**

# Mentoring Program

## **In His Steps Ministries**

P.O. Box 827-39202  
Canton and Madison Mississippi  
Jasper Bacon  
Phone 601.859.5708  
Fax 601.859.5709  
Email: [inhissteps4@juno.com](mailto:inhissteps4@juno.com)

## **Mentor Madison**

Madison Middle School  
1365 Mannsdale Rd.  
Madison, MS 39110  
Lisa Phillips-Principal  
Phone: 601.856.6159  
Fax: 601.853.2254



# Miscellaneous

## Important Phone Numbers

People for Prescription Assistance 1.888.477.2669

Hearing Aid 1.800.648.4327

American Medical Association (Complaints against Doctors) 1.800.621.8335

For Eye Care 601.420.5739

Donated Dental 601.932.2200

Breast and Cervical Cancer Program 601.576.7466

National Cancer Institute 1.800.4CANCER/1.800.422.6237

MS Cancer Registry 601.815.5482

LIFE 601.969.4009



## Medicare

General Information Number 601.354.4929

1.800.948.3090

Part D Coverage Inquires 1.866.835.7595

## CHIP (Children Health Insurance Program)

Services and Benefit Information 601.576.4111

Eligibility Information 1.800.421.2408

## MEDICAID

550 High St. Ste. 1000, Jackson, MS 39201

601.359.6050

1.800.421.2408

Helps pay for medical services for low income people

### Canton Regional Office

5360 I-55 N

Jackson, MS 39211

601.978.2399

### Sacred Heart-Camden

MDHS

1493 Hwy 17

### Flora Office

Regional Office in Yazoo

110 N. Jerry Clower Blvd. Ste. A

Yazoo, MS

662.746.2309

Camden, MS 39045

662.468.2354

## **MEDICAID (*cont.*)**

General Information Numbers	1.800.421.2408 601.359.6050
To order a Medicaid Card	1-800-772-1213 (TTY 1-800-325-0778)
Transportation	1.877.892.3997 ( <i>Help Desk</i> ) 1.866.331.6004 ( <i>Where Is</i>
<i>My Ride</i> )	
Logistic Care	1.866.527.9934
Bolivar County	662.846.6161
Lefluer Transportation	601.853.1823

## **Social Security**

100 W. Capitol St. Ste. 225 McCoy Bldg.  
Jackson, MS 39269  
1.800.331.8135 (Local)  
1.800.772.1213 (National)  
601.965.5418 (TTY)

# Schools

## Canton Public Schools

**Canton Public School District Office**  
403 Lincoln St.  
Canton, MS 39046  
601.859.4110 Fax: 601.859.4023  
*Superintendent, Ike Haynes*

**Canton Elementary**  
740 E. Academy St.  
601.859.2400  
Level: 3-5

**Ethel L. Nichols Middle School**  
529 N. Mace St.  
601.859.3741  
Level: 6-8

**Canton Career Center**  
487 N. Union Extension  
601.859.3985  
Level: 10-12

**Jimmie M. Goodloe Elementary**  
551 Finney Rd.  
Canton, MS 39046  
601.407.1809  
Level: K-5

**Canton Educational Services**  
*(Alternative School)*  
529 N. Mace St  
601.859.5010  
Fax: 601.859.5012  
Level: K-12

**Huey L. Porter Middle School**  
551 Finney Rd.  
Canton, MS 39046  
601.407.1809  
Level 6-8

**Canton High School**  
634 Finney Rd.  
601.859.5325  
Fax: 859.2554  
Level 9-12

**McNeal Elementary**  
364 Martin Luther King Dr.  
601.859.3654  
Level: PK

**Reuben B. Myers Canton School of Arts**  
357 Old Yazoo City Rd



601.855.7819  
Level: PK-5

## Madison County Schools

### **Ann Smith Elementary School**

3065 S. Pear Orchard  
Ridgeland, MS 39157  
601.856.6621

### **Camden Elementary School**

4784 Hwy 43 North  
Camden, MS 39045  
662.468.2833

### **Canton Academy**

191 Academy St.  
Canton, MS 39046  
601.859.5231

### **Career and Technical Center**

142 Calhoun Pkwy  
Madison, MS 39110  
601.859.6847

### **East Flora Elementary School**

4759 Hwy 22 E \* P.O. Drawer J  
Flora, MS 39710  
601.879.8724

### **Germantown High School**

200 Calhoun Pkwy  
Madison, MS 39110  
601.859.6150

### **Germantown Middle School**

202 Calhoun Pkwy  
Madison, MS 39110  
601.859.0376

### **Highland Elementary School**

330 Barne Rd.

Ridgeland, MS 39157  
601.853.8103

### **Luther Branson Elementary School**

3903 Hwy 16 East  
Canton, MS 39046  
601.859.2743

### **Madison Avenue Elementary School**

1199 Madison Ave.  
Madison, MS 39110  
601.856.2951

### **Madison Avenue Upper Elementary School**

1209 Madison Ave.  
Madison, MS 39110  
601.856.6609

### **Madison Central High School**

1417 Highland Colony Pkwy  
Madison, MS 39110  
856.7121

### **Madison Crossing Elementary School**

300 Yandell Rd.  
Madison, MS 39110  
601.898.7710

### **Madison Middle School**

1365 Mannsdale  
Madison, MS 39110  
601.605.4171

### **Madison Station Elementary**

459 Reunion Pkwy

Madison, MS 39110  
601.856.6246

**Mannsdale Elementary School**  
443 Mannsdale Rd.  
Madison, MS 39110  
601.879.0309

**Northeast Madison Middle School**  
820 Sulphur Spring Rd.  
Canton, MS 39046  
601.855.2409

## **Madison County Schools (Cont.)**

**Olde Towne Middle School**  
210 Sunnybrook Rd.  
Ridgeland, MS 39157  
601.898.8730

**Ridgeland High School**  
586 Sunnybrook Rd.  
Ridgeland, MS 39157  
898.5023

**Rosa Scott School**  
200 Crawford St.  
Madison, MS 39110  
601.605.0054

**Velma Jackson Magnet School**  
2000-A Loring Rd.  
Camden, MS 39045  
662.468.2531



# Social Services Agencies

## **American Red Cross -Central MS Chapter**

875 Riverside Dr.  
Jackson, MS  
601.353.5442----601.353.5466 (Fax)

### *Services Provided*

- *Disaster Relief*
- *Shelter and supplies*

## **Catholic Charities**

850 E. River PL  
Jackson, MS 39201  
601.355.8634

### *Services Provided:*

- *Adoption Services*
- *Counseling Services*
- *Domestic Violence Services*
- *Alcohol and Drug Services*
- *Immigration Services*
- *Therapeutic Foster Care*
- *Hope Haven Residential*

## **Central MS Planning Development & District**

1170 Lakeland Dr.  
Jackson, MS  
601.981.1511 -- 601.981.1515 (Fax)

### *Services Provided:*

- *Assistance*
- *Awareness and Information*
- *Access*

## **Child Support Customer Service & Case Info**

Department of Health and Human Services  
Phone: 1.844.694.2347

- *Parenting Information*

## **Families First For Mississippi**

1425 Lakeland Dr.  
Jackson, MS 39216  
Phone: 601.366.6405  
Website: [www.familiesfirstforms.org](http://www.familiesfirstforms.org)

- *Fatherhood*

## **MADCAPP—Madison County Allied Against Poverty**

181 Watford Parkway Drive  
Canton, MS 39046  
601.407.1404

### *Services Include:*

- *Food Pantry*
- *Clothing Closet*
- *Community Kitchen*

## **MCCSA-Madison County Citizens Services Agency**

1005 W. Peace Street (Transportation)-  
601.391.1993  
140 W. Center Street (Other Services)-  
601.855.5710  
Canton, MS 39046  
Website: [mccsaweb.org](http://mccsaweb.org)

- *Transportation*
- *Congregate Meals*
- *Ombudsman*
- *LIHEAP*
- *Information and Referral*
- *Outreach*

- *Commodity Supplemental Food Program (CSFP)*

**Madison County WIN Job Center**

152 Watford Pkwy Dr.  
Canton, MS 39046  
601.859.7609

*Services Provided:*

- *Job Placement*
- *Veteran Services*
- *Services For People with Disabilities*

**Madison County Department of Human Services**

867 MLK Drive  
Canton, MS 39046  
601.859.1276

**Social Services Agency**

**MS Department of Human Services  
Division of Aging and Adult Services**

750 N. State St.  
Jackson, MS  
601.359.4929/1.800.948.3090  
Website: [www.mdhs.state.ms.us](http://www.mdhs.state.ms.us)

*Services Provided:*

- *Foster Care*
- *Transportation*
- *Information and Assistance*
- *Nutrition*
- *SNAP (Supplemental Nutrition Assistance Program)*

**Our Daily Bread**

349 N. Canal St.  
Canton, MS 39046  
601.859.9211

*Services Provided:*

- *Meals on Wheels*
- *Food Pantry*
- *Clothing Closet*

**Mississippi Families for Kids**

407 Briarwood Dr. Ste. 209  
Jackson, MS 39206  
Phone: 601.957.7670  
Website: [www.mffk.org](http://www.mffk.org)

**Pine Grove Association**

348 Renfro Rd.  
Canton, MS 39046

*Services Provided:*

- *Individual and Family Social Services*

**MS Get Help**

**Aging & Disability Resource Center**

1170 Lakeland Dr.  
Jackson, MS 39216  
[www.mississippigethelp.org](http://www.mississippigethelp.org)  
1.888.995.9925

*Services Provided:*

- *Community Resources*
- *Referrals for Case Management*
- *Public/Private Benefits*

**Sacred Heart Church**

1493 Hwy 17  
Camden, MS 39045  
662.468.3164

*Services Provided:*

- *Daycare*
- *Family Health Clinic*
- *Department of Human Services*
- *Credit Union*
- *After School/Summer Enrichment Program*
- *Senior Meal Program*

- *Grocery Program*
- *Mobile Home/Home Rehabilitation*

**The Salvation Army of the Greater Jackson Area**

Family Store & donation Drop Off (*Temporary*)  
 590 Raymond Rd.  
 Jackson, MS 39204  
 601.717.4049

**The Salvation Army of the Greater Jackson Area**

110 Presto Lane  
 Jackson, MS 39206  
 601.982.4881

*Services Provided:*

- *Thrift Store (clothing, furniture, etc.)*
- *Entergy Power to Care*
- *Center of Hope Transitional Shelter*

**South Central Community Action Agency**

168 W. Center St.  
 Canton, MS 39046  
 6601.407.5473

*Services Provided*

- *Weatherization*
- *Rental Assistance*
- *Medication*
- *Gas*
- *Obtaining and maintaining adequate housing*

## Special Needs Students

**Canton Public School District Department of Special Services**

La'Tisha Sargent-Exceptional Services Director  
 634 Finney Rd.  
 Canton, MS 39046  
 Phone 601.859.2179

**Madison County School District Department of Special Services**

Lynn Slay-Special Services Director  
 117 Fourth St.  
 Flora, MS 39071  
 Phone 601.879.3000

**Mississippi Department of Education-Office of Instructional Programs and Services Office of Special Education**

Central High School Building  
 359 N. West Street  
 P.O. Box 771  
 Jackson, MS 39205  
 Phone: 601.359.3498  
 Fax: 601.359.1829



# Tobacco

## **Mississippi Tobacco Free Coalition of Madison, Yazoo, and Holmes**

Rochelle Culp  
200 Park Circle, Ste.3  
Flowood, MS 39232  
Phone: 601.420.4493

## **Mississippi Tobacco Quitline**

385-B Highland Colony Parkway, Ste. 504  
Ridgeland, MS 39157  
Phone: 1.800.QUITNOW -1.800.784.8669  
Fax: 1.601.899.8650  
Email: [quitline@lgh.org](mailto:quitline@lgh.org)

# Tutoring

## **Mathnasium**

670 Highway 51, Suite G  
Ridgeland, MS 39157  
Phone: 601.707.5379  
[www.mathnasium.com](http://www.mathnasium.com)

## **SyLvan Learning Center**

4915 I-55 North Ste. 106-A  
Jackson, MS 39206  
Phone: 601.207.1035

## **The Mathworks Inc.**

6700 Old Canton Rd.  
Ridgeland, MS 39157  
Phone: 601.559.8009  
Website: [www.themathworksinc.com](http://www.themathworksinc.com)

## **Mississippi Community Education Center**

Madison Office  
961 Madison Ave.  
Madison, MS 39210  
Phone: 601.326.6404

# United Way

## United Way of the Capital Area

843 N. President Street

P.O. Box 23169

Jackson, MS 39225

Phone: 601.948.4725

[www.myunitedway.com](http://www.myunitedway.com)

Serve Hinds, Madison and Rankin Counties

- *Quality Affordable Housing*
- *Quality Affordable Healthcare*

**Resources Number: 211**

# **Special Thanks**

**Hederman Brothers**

**United Way of the Capital Area**

North Madison County  
Excel By 5  
Lead Agency



**UNITED WAY OF THE CAPITAL AREA**  
Serving Hinds, Madison & Rankin Counties

*Updated 3/29/17*