

# ECONOMIC OUTLOOK BREAKFAST

NOVEMBER 17, 2020



# THE EFFECTS OF COVID ON ECONOMIC DEVELOPMENT

- COVID has created unique challenges for economic developers
- Manufacturing and supply chains have been greatly impacted
- Rapid adoption of technology and virtual meetings

# Sales and Use Tax to Date

	Madison County Year to Date (Fiscal Year Oct - September)			
	2018/2019	2019/2020	Gain/(Loss)	% Change
<b>Canton</b>	\$2,984,797	\$3,139,935	\$155,138	5.20%
<b>Flora</b>	\$358,503	\$365,807	\$7,304	2.04%
<b>Madison</b>	\$8,995,976	\$9,249,775	\$253,799	2.82%
<b>Ridgeland</b>	\$13,420,077	\$13,506,044	\$85,967	0.64%
<b>Total</b>	\$25,759,352	\$26,261,560	\$502,209	1.95%



## YEAR OVERVIEW // OCTOBER 2017 - SEPTEMBER 2020

- Musee • Fastenal • Malouf Construction • Topre
- Vertex Aerospace • B&B Electrical & Utility Contractors, Inc. • Logista
- Systems Electro Coating • The Village at Madison

9

Projects Won

577

Jobs Committed

\$155,720,000

Investments Committed

\$61,687

Average Annual Wage

\$2,316,000

Madison CCS Estimated Revenue

\$1,647,000

Grants Awarded



Purchased 900 acres within  
the Madison MegaSite



Maintained Work Ready  
Community Status



Entergy Committed  
Substation



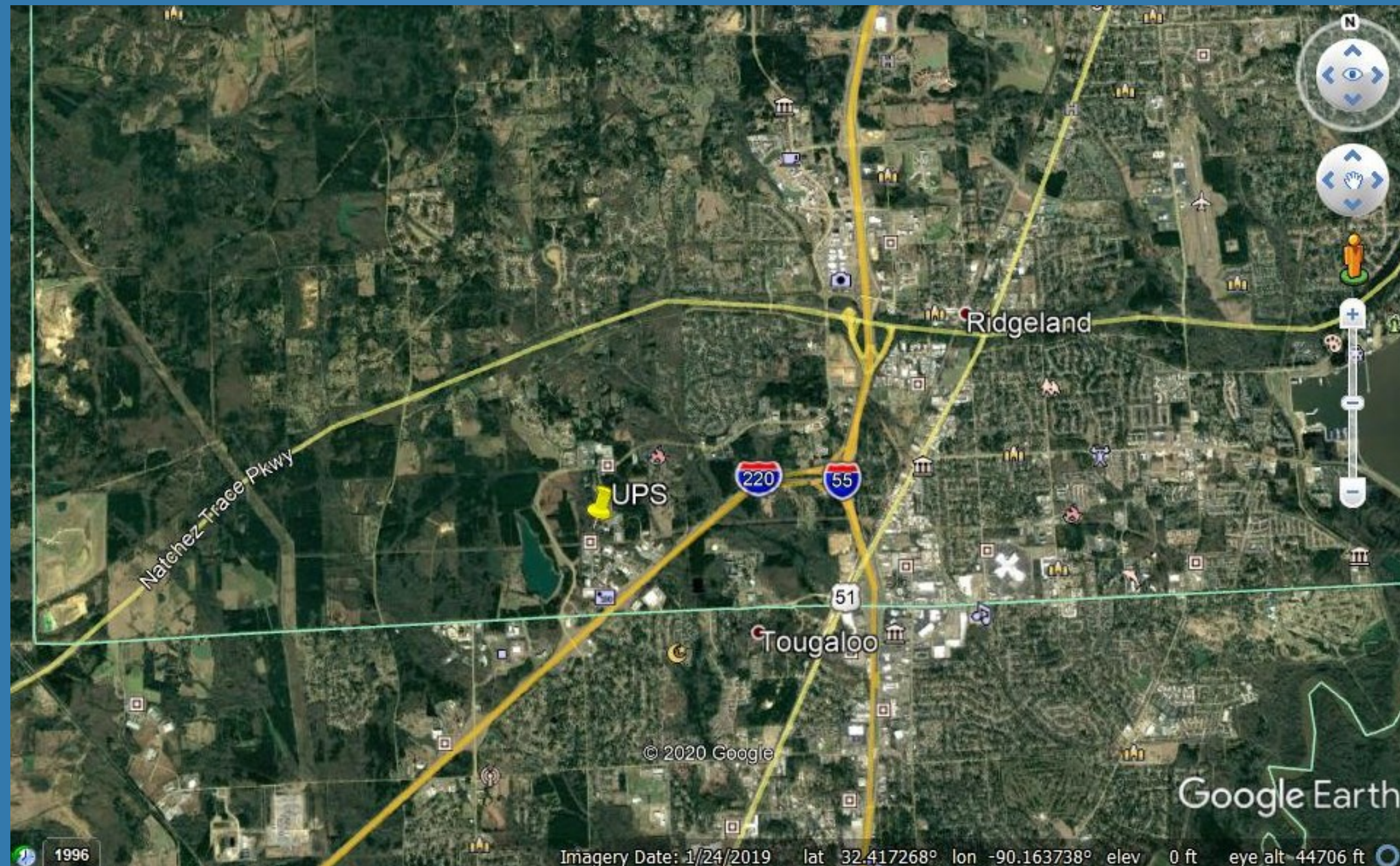
Developed MegaSite  
Infrastructure



Adapted to Virtual  
Environment



# UPS





# Amazon





# Amazon





OCTOBER & NOVEMBER 2020

## Amazon & UPS

2

Projects Won

1161

Jobs Committed

\$228,600,000

Investments Committed

\$37,017

Average Annual Wage

\$4,362,000

Madison CCS Estimated Revenue

\$14,900,000

Grants Awarded



Purchased 900 acres within  
the Madison MegaSite



Maintained Work Ready  
Community Status



Entergy Committed  
Substation



Developed MegaSite  
Infrastructure



Adapted to Virtual  
Environment





OCTOBER 2017 - NOVEMBER 2020

- Musee • Fastenal • Malouf Construction • Topre
- Vertex Aerospace • B&B Electrical & Utility Contractors, Inc. • Logista
- Systems Electro Coating • The Village at Madison • UPS • Amazon

11  
Projects Won

1,738  
Jobs Committed

\$384,320,000  
Investments Committed

\$44,618  
Average Annual Wage

\$6,678,000  
Madison CCS Estimated Revenue

\$16,547,000  
Grants Awarded



Purchased 900 acres within  
the Madison MegaSite



Maintained Work Ready  
Community Status



Entergy Committed  
Substation



Developed MegaSite  
Infrastructure



Adapted to Virtual  
Environment

# WORKFORCE ANALYTICS



Investment in nationally recognized workforce assessment tool EMSI



Provides labor market data customized by region



Creates a competitive advantage when evaluating workforce