

Role of the Central Mississippi Planning and Development District (CMPDD)

April 14, 2021



BACKGROUND

- Private Non-Profit Organization
- Established in 1968 to promote regional cooperation
- Serve a Seven (7) County region
- 32 member Board of Directors consisting of Local Officials, Business/Industry Reps, and Minority Reps



AREA AGENCY ON AGING

- Home Delivered and Congregate Meals for Senior Adults
- Transportation Services
- Homemaker Services
- Adult Protective Services



COMMUNITY & ECONOMIC DEVELOPMENT

- Grant Writing/Administration for CDBG, EDA, DRA, etc.
- Central Mississippi Development Company for Small Business Loans
- Central Mississippi Public Improvement Corporation



PLANNING SERVICES

- Comprehensive Planning services for Local Governments
- Master Plans for other Institutions and Organizations
- Hazard Mitigation Planning
- Redistricting Plans
- GIS Mapping and Drone Services



WORKFORCE DEVELOPMENT

- Southcentral Mississippi Works (SMW)
- Serve a 17 County Region (CMPDD & SWPDD) through network of seven (7) WIN Job Centers in Canton, Jackson, Vicksburg, Pearl, Brookhaven, McComb, and Natchez
- Administrative/Fiscal Agent for federally funded Workforce Training Services
- Provide funding for training for individuals who need to acquire or upgrade their skills and to help employers offset the cost of training new employees
- Partner with Community Colleges, Local Economic Developers, and State Agencies (Employment Security, Rehabilitation Services, and Human Services) to connect individuals to with training and employment.



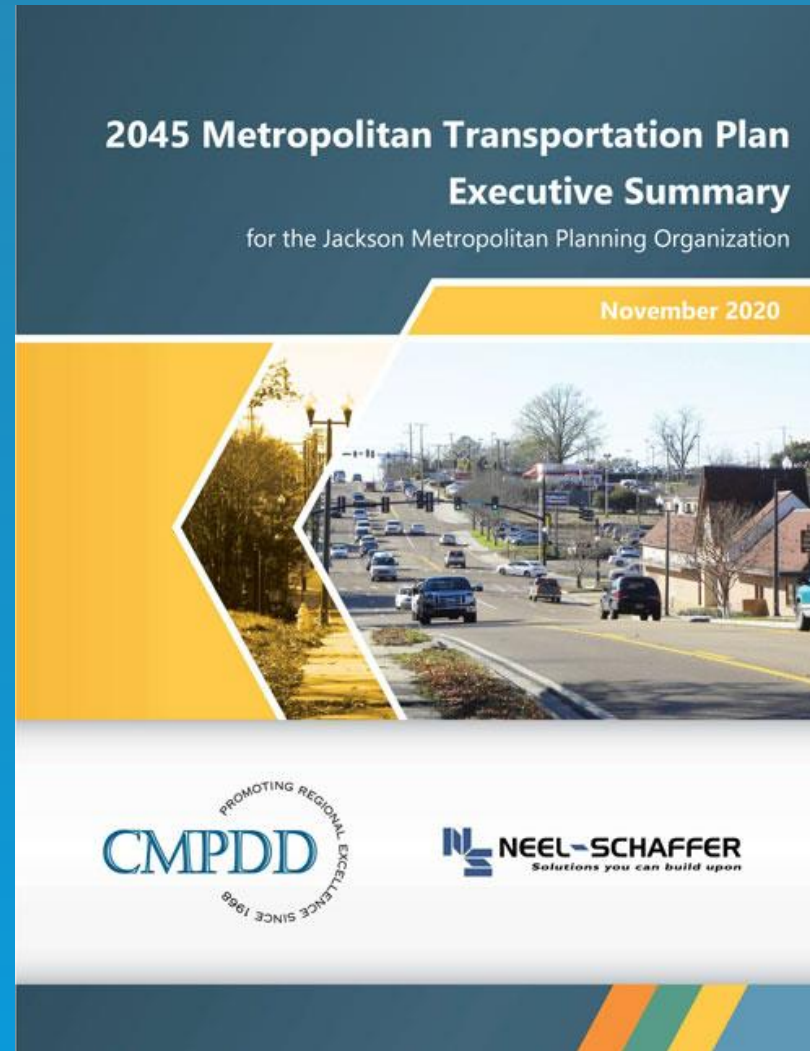
METROPOLITAN PLANNING ORGANIZATION (MPO)

- Coordinate transportation activities for urbanized portions of Hinds, Madison, and Rankin Counties
- Develop process for allocating Surface Transportation Block Grant and Transportation Alternative Funds for eligible projects
- Intermodal Technical Committee and Metropolitan Planning Policy Committee



METROPOLITAN PLANNING ORGANIZATION (MPO)


Long-Range Transportation Plan



METROPOLITAN PLANNING ORGANIZATION (MPO)

Transportation Improvement Program (TIP)

FFY 2021-2024
TRANSPORTATION IMPROVEMENT PROGRAM



FOR THE JACKSON URBANIZED AREA

PREPARED BY
CENTRAL MISSISSIPPI
PLANNING AND
DEVELOPMENT DISTRICT
1170 Lakeland Dr.
Post Office Box 4935
Jackson, MS 39296-4935

CITY OF JACKSON
DEPARTMENT OF
PLANNING & DEVELOPMENT
Transit Services Division
1785 Highway 80 West
Jackson, MS 39204

in cooperation with
MS Department of
Transportation
Federal Highway
Administration
Federal Transit
Administration



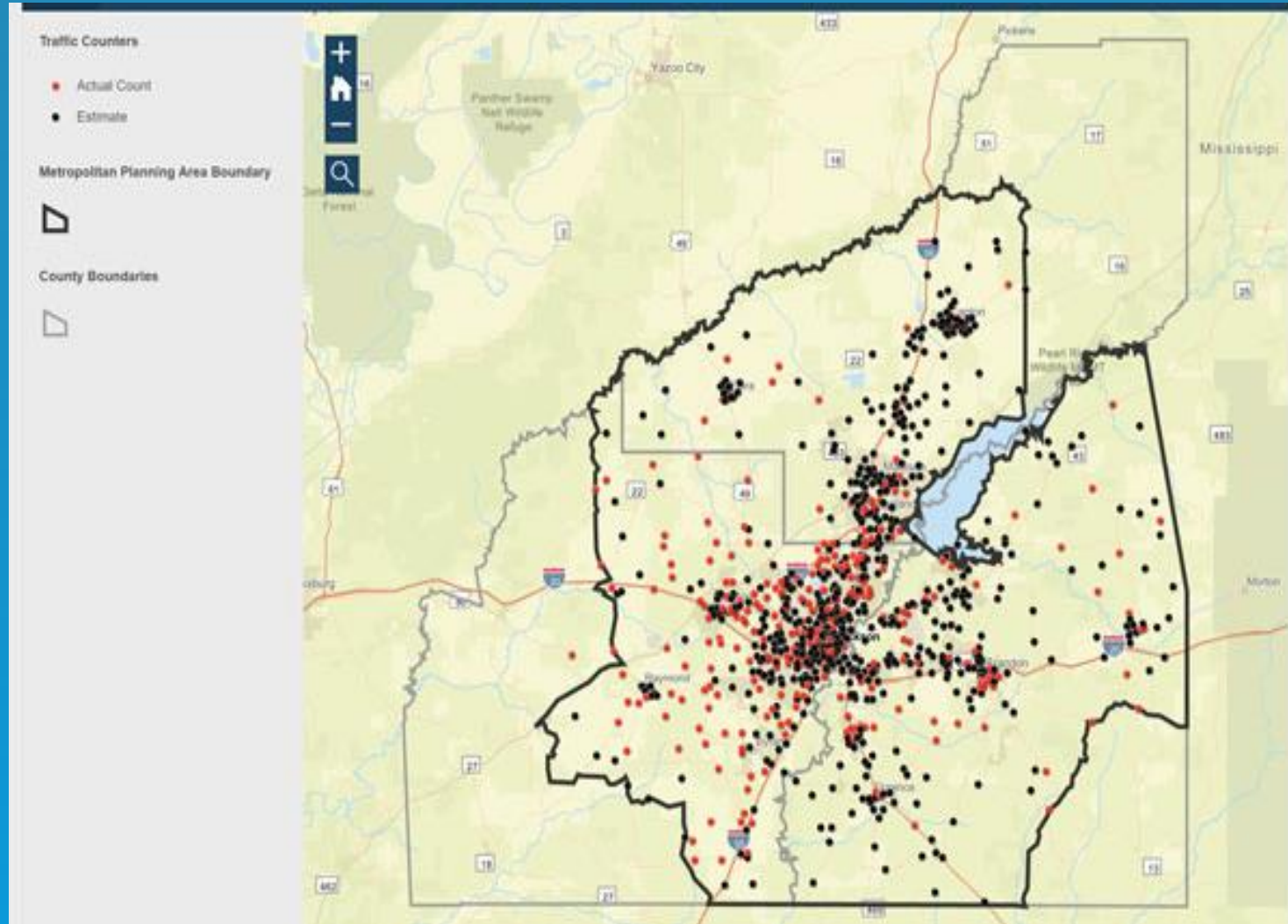
METROPOLITAN PLANNING ORGANIZATION (MPO)



Pavement Management System



METROPOLITAN PLANNING ORGANIZATION (MPO)



Traffic
Count
Viewer

MPO FUNDING IN MADISON COUNTY

- **\$45.1 million** allocated to various projects since 2006.
- Notable Projects:
 - Lake Harbour Drive Widening - \$8.7 million
 - Lake Harbour Drive Extension - \$4.7 million
 - Old Canton Rd Widening from Hoy Rd to St Augustine - \$4.8 million
 - Hoy Road Widening from Old Canton Rd to Bradford Place - \$6.8 million (under construction)
 - East County Line Road Widening - \$3.6 million



MPO FUNDING IN MADISON COUNTY

- **\$12.5** million allocated to projects currently in implementation phase.
- Projects:
 - Reunion Parkway Phase 3 - \$3.6 million
 - Bozeman Road Widening - \$4.4 million
 - Catlett Road Widening/Realignment - \$2.6 million
 - Kearney Park Road Resurfacing - \$500 K
 - Traffic Signal Improvements - \$1.3 million



For more information:
Visit website at cmpdd.org

CMPDD
1020 Centre Pointe Blvd
Pearl, MS 39208
Telephone: 601-981-1511

