



THE UNIVERSITY OF
SOUTHERN MISSISSIPPI

THE TRENT LOTT NATIONAL CENTER FOR EXCELLENCE IN
ECONOMIC DEVELOPMENT AND ENTREPRENEURSHIP

Madison County Economic Indicators 2016 Overview



Prepared By:

Shelby Glover, Graduate Assistant
Dr. Shannon Campbell, Director
Dr. Chad Miller, Program Director

JUNE 2016

Table of Contents

Executive Summary	Pg 3
Population	Pg 4
Personal Income and Employment	Pg 5
Tax Revenues	Pg 8
Education	Pg 10
Millage Rates	Pg 12
Summary of Findings	Pg 13
Appendix A	Pg 14
Appendix B	Pg 21
Appendix C	Pg 24

Index of Figures

Figure 1: Population Distribution of Madison County 2015 compared to 2025..Pg 4	
Figure 2: MC District Revenue by Source 2013/2014 School Yea	Pg 10

Index of Maps

Map 1: Mississippi’s Per Capita Personal Income 2013-2014	Pg 14
Map 2: Mississippi Per Capita Income by County 2014	Pg 15
Map 3: Mississippi’s Labor Force By County April 2016	Pg 16
Map 4: Average Monthly Manufacturing Employment 2014	Pg 17
Map 5: Mississippi Employed by County	Pg 18
Map 6: In-Commuters by County	Pg 19
Map 7: Out-Commuters by County	Pg 20
Map 8: Madison County Citizens Place of Work	Pg 24
Map 9: Where Workers in Madison County are Commuting from	Pg 25

Index of Tables

Table 1: Job Growth from 2015 to 2016 in Specific Industries	Pg 7
Table 2: Sales Indicated by Sales Tax by Industry April 2016	Pg 8
Table 3: Gross Sales by Industry April 2016	Pg 9
Table 4: MC School District Statement of Revenues, Expenditures and Changes in Fund Balance	Pg 11
Table 5: Gross Sales by County Fiscal Year 2016 through April	Pg 21
Table 6: Residence of MC Commuting to Work Sorted by Workplace	Pg 26
Table 7: Residence of MC Commuting to Work Sorted by Residence	Pg 27

Executive Summary

The University of Southern Mississippi, Department of Economic Development and Trent Lott National Center compiled this report for the Madison County Economic Development Agency and the Madison County Business League and Foundation. This report provides an update of the most recent data and statistics available and follows a format originally compiled for Madison County in a 2010 report by the Mississippi State University, John C Stennis Institute of Government. In the following report, the comparison of Madison County to other counties across the state paints a great picture at how well Madison County is doing. The report will touch on what Madison County looks like now and why, what it will look like in the future and why, and notable trends throughout the area and region as a whole.

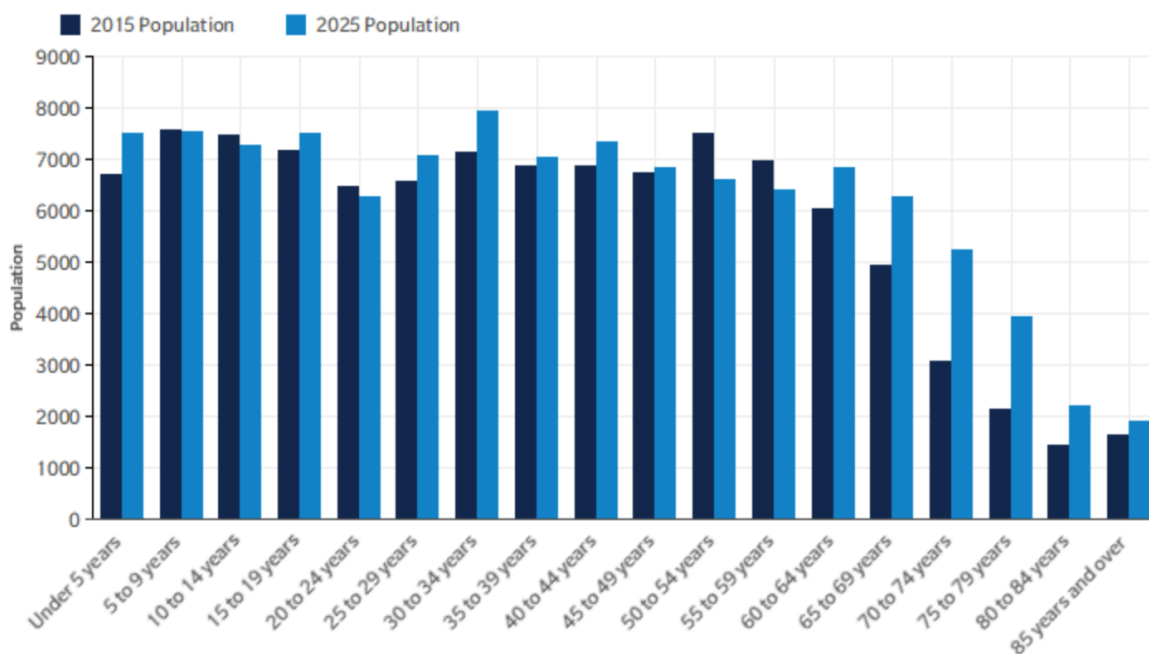
The report provides a snapshot of the overall economic health of Madison County in comparison to other Mississippi counties and, where possible, national economic trends. Madison County has a current population of 104,673 with a 7.8% growth in the last 5 years. Madison County's population growth rate is the highest among the 5 counties in Jackson Metropolitan Area. Madison County has had 3.9% job growth over the last year, adding over 2,000 jobs. The state average is 1.6% and national average is 2% change over the last year, which are both below the county. The percentage of people living below poverty in Mississippi is 22.6%. Madison County's poverty rate is 13.1%. From the 2010-2014 Census data, the Median Household Income for the state of Mississippi is \$39,464. Madison Counties Median Household income for this time period is \$63,156. As you can see, Madison County is well above the state average.

Population

Over the past decade, Madison County has experienced a significant positive growth rate in population. Between 2005 and 2015, the county’s population increased from 84,847 to 103,252; this represented 22% growth rate. Madison County’s population growth rate is the highest among the 5 counties in Jackson Metropolitan Area.¹ Population projections available indicate that the county’s population is likely to grow by 8,400 from 103,252 in 2015 to 111,652 in 2025. Pre-school population (under 5 years) will increase by 770, with a change of 11% from 2015 to 2025. The number of persons whose ages range between 10-19 years will also increase by 136, with a 1% change over the next 10 years. Over the next decade, the retired population (65 years and above) that makes up 19% of the 2015 population will undergo an increase from 19,238 to 26,402 from 2015 to 2025 representing an overall increase by 37%. The ageing of the population will likely have a major impact on the organization and delivery of health care. Of particular concern will be the shift from acute to chronic illnesses and the growing pressure on the region's healthcare workers, especially nurses and para professionals.

Figure 1 illustrates the population distribution by age of Madison County in 2015 compared to 2020. There is an expected increase in almost every age category over the next 10 years.

Figure 1. Population Distribution by Age of Madison County 2015 compared to 2025



Source: EMSI

Though the county will experience a proportional increase in older persons, its impact may not necessarily have an adverse effect on firms’ relocation and expansions decisions. The

¹ Jackson Metropolitan Area covers five counties: Hinds County, Madison County, Copiah County, Rankin County and Simpson County

² Retrieved from: <http://www.census.gov>

Madison County Report

proximity of Madison County to surrounding counties within Jackson Metropolitan Area makes it easier for businesses to attract labor. This idea is embodied in the concept of regionalism where Madison County finds increased value in cooperating rather than competing with surrounding counties for limited resources. Issues such as the availability of labor is an example of an economic development challenge that requires regional cooperation on the part of local officials. To promote regional economic development in attracting talent and businesses, local officials in Madison County must create structures that recognize the fundamental interdependence of cities and the surrounding suburbs.

Madison County's youthful population is expected to slightly increase over the next decade. The proportion of persons aged 14 or below is expected to change by 3%. In terms of the numbers alone, perhaps the greatest challenge to the county with a youthful population and high population growth rates lies in dealing with the high number of new entrants to the job market each year. New jobs will need to be created each year to absorb the increase in labor force.

Personal Income and Employment

Madison County has one of the lowest poverty rates in Mississippi. Data from the United States Census Bureau indicates a decline in poverty rate among the county's total population whereas over the years, the poverty rate in the state of Mississippi has experienced an upward trajectory. The percentage of people living below poverty in Mississippi is 22.6%. Madison County's poverty rate is 13.1%. These numbers are from the most recent Census survey from 2010 to 2014, the American Community Survey 5-Year Profiles.²

From the 2010-2014 Census data, the Median Household Income for the state of Mississippi was \$39,464. Madison County's Median Household income for this time period was \$63,156, well above the state average. It is important to note that the diversification of Madison County's economy, coupled with an increase in population, created an enabling environment for local businesses to thrive, despite the sluggish economic growth rate in Mississippi and the U.S.

Map 1 in Appendix A shows the Mississippi per capita personal income change of 2.4% from 2013 to 2014. Madison County, MS had a change of 2.7%. Surrounding counties included: Rankin County at 3.4%, Hinds County at 3.4% and Yazoo County at -2.5%. The figure shows the different counties of Mississippi and where they fall in the percentage category.

Per capita income, also known as average income, measures the average income earned per person in a specific area, in this case in a county, for a specified period of time. To calculate per capita income, the area's total population divides the area's total income. Map 2 in Appendix A shows each county in Mississippi's per capita income. Madison County's per capita income, according to the most recent Census in 2014, is \$58,604.³ That is also the

² Retrieved from: <http://www.census.gov>

³ Retrieved from: <http://mdes.ms.gov>

Madison County Report

highest per capita income in the state of Mississippi. Not only is the county of Madison the highest in the state, but the region surrounding the county, with Hinds and Rankin, is the top region, with per capita income. This is a direct reflection of high paying jobs and an educated workforce.

The labor force, also called the workforce, is the labor pool in employment within a designated area. Map 3 in Appendix A shows the labor force of each county in Mississippi. These are the most up-to-date numbers available from April 2016 Department of Employment Security. The region of Madison, Hinds and Rankin County, has the largest labor force in Mississippi. The combined three counties in the Jackson Metropolitan Service Area positions Madison County to be highly competitive in attracting workers into high paying jobs.

Manufacturing has a strong presence in Madison County, and ranks third largest in the number of manufacturing employees with 7,605, shown in Appendix A, Map 4. The number of manufacturing employees of the surrounding counties are fairly low compared to Madison County indicating the county is attracting manufacturing employees in the region. Compared to the county's entire labor force of 51,560, 7,605 manufacturing employees is just a portion of Madison County's diverse workforce.

Map 5 in Appendix A shows the number of Mississippians who are employed in each county. This provides an indicator of how many in the labor force commutes from other states to work in Mississippi. Madison County has 49,630 Mississippians work in the county of its overall labor force of 51,560. Since Madison County is not on the state line, it is understandable that most workers are coming from within the state. It also is another way to show that most people who work in the county are Mississippians..

Economic developers and others need to understand how many workers choose to live and work in the community compared to commuting in or out for work. This indicator of resident workers compared to commuting workers drive decisions such as affordable housing and transportation infrastructure decisions. According to the most recent U.S. Census ACS Data of 2006-2010,(see Map 6 and 7 in Appendix A) shows the number of people commuting into the county and the number of people commuting out of the county. Map 6 shows two numbers for each county in Mississippi, the amount of residents living and working in the county and the amount of workers that commute into the county as indicated on the map by the number on top. For Madison County it is almost a 50-50 representation. Madison County has 21,569 people who both live and work there. They also have 22,703 people who commute into the county for work. This could be a reflection of the higher cost of living in Madison County compared to the surrounding areas, or the easy drive time throughout the region. Map 7 shows the number of residents that work and live in the county along with the number of residents that commute out of the county to work. Again, Madison County has 21,569 that work and live in the county. The county has 21,519 people who live there and commute out for work. Again, these numbers are about 50-50. This could mean that Madison County is a great place to live and raise a family, but there is not enough jobs within the county to support the demand, or again, it could be the easy commute throughout the region.

Madison County Report

Table 1 below shows the specific industries that experienced job growth of at least 10 employees over the last year, 2015-2016.

Table 1: Job Growth from 2015 to 2016 in Specific Industries

Description	2015 Jobs	2016 Jobs	2015 - 2016 Change	2015 - 2016 % Change
General and Operations Managers	204	217	13	6%
Education Administrators, Postsecondary	81	91	10	12%
Postsecondary Teachers	689	780	91	13%
Coaches and Scouts	134	148	14	10%
Security Guards	131	142	11	8%
First-Line Supervisors of Food Preparation and Serving Workers	116	126	10	9%
Cooks, Fast Food	182	194	12	7%
Cooks, Restaurant	94	105	11	12%
Combined Food Preparation and Serving Workers, Including Fast Food	319	345	26	8%
Waiters and Waitresses	193	213	20	10%
Janitors and Cleaners, Except Maids and Housekeeping Cleaners	190	204	14	7%
Cashiers	366	387	21	6%
Retail Salespersons	436	470	34	8%
Customer Service Representatives	193	205	12	6%
Secretaries and Administrative Assistants, Except Legal, Medical, and Executive	325	345	20	6%
Office Clerks, General	326	347	21	6%
Security and Fire Alarm Systems Installers	30	49	19	63%
Heavy and Tractor-Trailer Truck Drivers	275	290	15	5%
Laborers and Freight, Stock, and Material Movers, Hand	184	194	10	5%
	13,749	14,657	908	7%

Retrieved from: EMSI Analyst

Tax Revenues

Gross Sales and Sales Tax Revenues

Table 2 shows the industries in Madison County with the highest grossing sales tax. According to the April 2016 numbers, Construction and Retail Trade are the industries with the highest grossing sales tax.⁴ The table shows the gross sales for each industry that have the highest sales tax in the county. Table 3 shows the Gross Sales by Industry in April 2016. Again, retail sector towards the bottom is doing very well.

Appendix B shows the Gross Sales by County throughout Mississippi. Madison County is highlighted in yellow in the table (Table 5).

Table 2: Sales Indicated by Sales Tax by Industry April 2016

Industry	Gross Sales	Calculated Sales Tax
Accommodation and Food services	\$1,345,306	\$87,411
Administrative and Support and Waste Mgt and Remediation Services	\$808,353	\$18,781
Arts, Entertainment, and Recreation	\$121,548	\$6,195
Construction	\$10,514,524	\$322,386
Other Services (Except Public Admin)	\$1,474,398	\$94,483
Professional, Scientific, and Technical Services	\$62,624	\$4,060
Real Estate and Rental and Leasing	\$596,866	\$18,370
Sector 31-33 Manufacturing	\$1,651,257	\$70,312
Sector 44-45 Retail Trade	\$13,399,677	\$296,590
Utilities	\$47,709	\$3,340
Wholesale Trade	\$91,510	\$2,892
Whole Trade (US, CAN, MEX)	\$8,217,404	\$56,352
TOTAL	\$38,506,724	\$988,885

Source: Department of Revenue

⁴ Retrieved from: <http://www.dor.ms.gov>

Madison County Report

Table 3: Gross Sales by Industry April 2016

Industry	Gross Sales
Accomodation and Food Services	\$421,014,374
Administrative and Support and Waste Mgt and Remediation Services	\$48,186,303
Agriculture, Forestry, Fishing and Hunting	\$174,844
Arts, Entertainment, and Recreation	\$4,612,479
Construction	\$209,942,841
Educational Services	\$2,909
Finance and Insurance	\$603,681
Health care and Social Assistance	\$337,542
Information	\$85,604,011
Mining, Quarry, and Oil and Gas Extraction	\$10,323,144
Other Services (Except Public Administration)	\$66,154,976
Professional, Scientific, and Technical Services	\$46,876,747
Public Administration	\$2,792,621
Real Estate and Rental and Leasing	\$44,360,202
Sector 31-33 Manufacturing	\$158,218,935
Sector 44-45 Retail Estate	\$2,149,723,639
Sector 48-49 Transportation and Warehousing	\$167,462
Utilities	\$31,413,476
Wholesale Trade	\$34,661,744
Wholesale Trade (US, CAN, MEX)	\$1,805,899,325
TOTAL	\$4,596,313,087

Source: Department of Revenue

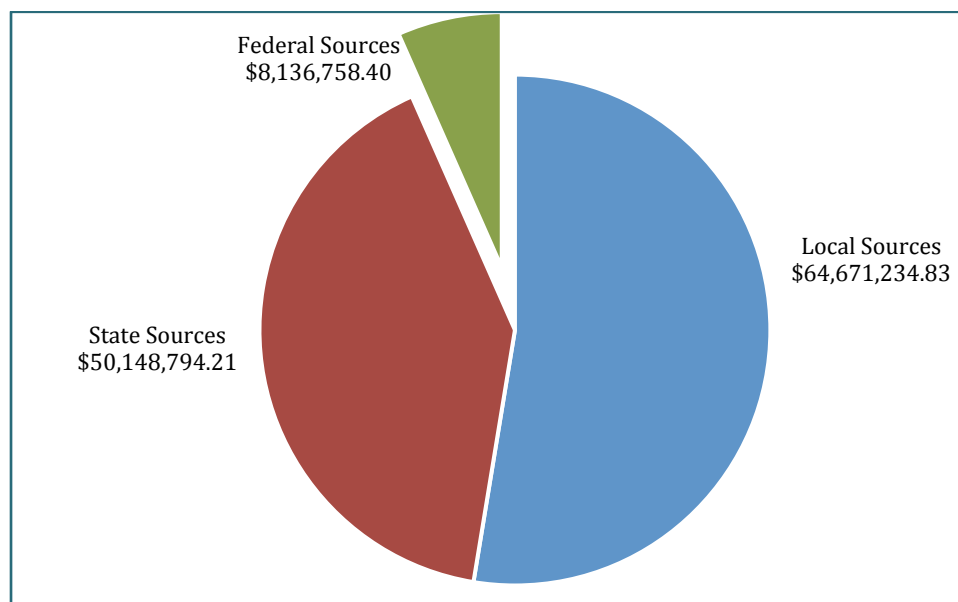
Education

Madison County School District Revenue

Total revenue from all sources to the Madison County School District was \$122,956,787 for the 2012 and 2013 school year. Of this amount, 52.6% (\$64,671,234) was derived from local sources (such as property tax). Madison County's local contribution as a percent of total revenues was the 2nd highest among the 152 school districts in Mississippi.⁵ Statewide, school district revenue from local sources averaged 32.5% of total revenue sources for the 2012/2013 academic year (see Figure 12).

The Madison County School District's expenditure per pupil was \$8,476 for the 2012-2013 year as compared to a statewide average of \$8,920. Madison County ranked 42 out of 152 school districts with the lowest expenditure per pupil in 2012/2013 school year. Instruction expenditures per student were \$5,909 (69.7% of total expenditures) within the Madison County School District as compared to \$5,902 at the state level. The percentage of total educational budget allocated for instruction by individual school districts ranges from 50% to 80%.⁶

Figure 2: Madison County District Revenue by Source 2013/2014 School Year



Source: Mississippi Department of Education

⁵ Revenue from local sources = \$1,409,344,434.66; revenue from state sources = \$2,213,479,958.41; revenue from federal sources = \$707,620,459.72 and revenue from intermediate sources = \$531,260.18. Total revenue from all sources = \$4,330,976,112.97

⁶ Retrieved from : <http://www.mde.k12.ms.us/docs/state-superintendent/superintendent-annual-report-2014.pdf?sfvrsn=2>

Madison County Report

Increased school enrollment necessitates the need for an upward adjustment in revenues and expenditures as the cost of providing educational services also increases. As demonstrated in Table 4, local sources of revenue for the Madison County School District increased from \$42,274,296 in 2011 to 46,400,667 in 2013 and \$48,235,258 in 2014. Between 2011 and 2014, local sources of revenue increased by approximately 14 percentage points. State sources of revenue also increased from \$40,377,324 in 2011 to \$44,681,976 in 2012 and \$47,255,353 in 2013. This subsequently increased to \$50,284,425 by the end of 2014. Over the 4-year period (2011 to 2014), state sources of revenue also increased by 24.5% (see Table 4).

Table 4: Madison County School District Statement of Revenues, Expenditures and Changes in Fund Balance⁷

Category	2014	2013	2012	2011
Revenues:	Amount	Amount	Amount	Amount
Local Sources	\$48,235,258	\$46,400,667	\$42,571,545	\$42,274,296
State Sources	\$50,284,425	\$47,255,353	44,681,976	\$40,377,324
Federal Sources	\$27,796	\$216,797	\$222,530	\$331,239
Total Revenues	98,557,479	\$93,872,817	87,476,051	\$82,982,859
Expenditures:				
Instruction	\$55,568,044	\$52,185,441	\$49,393,763	\$40,595,126
Support Services	\$36,575,301	\$33,058,180	\$31,078,737	\$27,283,760
Facilities Acquisition and Construction	\$95,439	\$39,216	\$0	\$0
Debt Service:				
Interest	\$11,390	\$10,285	\$0	\$23,451
Total Expenditures	\$92,250,183	\$85,293,122	\$80,472,500	\$67,902,337
Excess (Deficiency) of Revenues over (under) Expenditures	\$6,307,296	\$8,579,695	\$7,003,551	\$15,080,522
Other Financing Sources (Uses):				
Other financing sources (uses)	\$0	\$210	\$0	\$0
Sale of other property			\$14,401	\$31,900
Insurance Recovery	\$811	\$8,998	\$4,000	\$37,000
Operating Transfers In	\$4,202,823	\$12,467	\$0	\$505,818
Other Financing Sources	\$0	\$821	\$0	\$67
Operating Transfers Out	(\$6,903,121)	(\$12,229,196)	(\$1,191,618)	(\$1,069,120)
Total Other Financing Sources (Uses):	(\$2,699,487)	(\$12,206,910)	(\$1,173,427)	(\$494,335)
Net Change In Fund	\$3,607,809	(\$3,627,215)	\$5,830,124	\$14,586,187

⁷ Retrieved from: <http://www.osa.ms.gov/documents/schools/2013/13smadco-cpa.pdf>

Category	2014	2013	2012	2011
Balances				
Fund Balances:				
Beginning of period, as originally reported	\$0	\$31,511,266	\$25,681,142	\$11,094,955
Prior period Adjustments	\$0	(\$1,514)	\$0	\$0
1-Jul	\$27,729,337	\$31,509,752	\$25,681,142	\$11,094,955
30-Jun	\$31,337,146	\$27,882,537	\$31,511,266	\$25,681,142

Source: Mississippi Office of the State Auditor

Over the past 4 years, beginning 2011, federal sources of revenue to support the Madison County School District declined significantly; although it constitute less than 1% of total revenues for the school district. Revenues from federal sources dwindled from \$331,239 in 2011 to \$222,530 to 2012 and \$216,797 in 2013 (see Table 4). Significant proportion of revenues generated from local, state and federal sources were spent on instructional and support services. In 2011, expenditures on instructional and support services were \$67,878,886; this represented approximately 99.99% of total expenditures. Expenditures on instructional and support services increased from \$67,878,886 in 2011 to \$80,472,500 in 2012 and \$85,243,621 in 2013. By the end of 2014, expenditures on instructional and support services increased to \$92,143,345: up by 35.7% when compared to 2011 estimates (see Table 4).

Millage Rates

Millage rates are the percentage tax revenues per \$1,000 used to calculate taxes on property. Millage rates are most often found in personal property taxes, where the expressed millage rate is multiplied by the total taxable value of the property to arrive at the property taxes due. Local governments are the responsible entities for balancing the need to provide services to citizens; the need to generate sufficient revenues to pay for the cost of providing services, and the need to minimize the burden of taxation on any class of taxpayers to assure healthy growth within a county or region. Local officials achieve these objectives by providing sound financial planning and budgetary oversight. Madison County has a millage rate of 98.58.. The millage rate increased from the 2013/2014 numbers. In 2014/2015, approximately 44.92 mills of the total millage rate in Madison County were allocated to support the Madison county school district as compared to 2.25 mills for junior colleges. Furthermore, 4.86 mills were allocated to road construction and maintenance. Out of the total millage rate, 1.00 mills and 3.95 mills were also apportioned to fire protection and county garbage respectively.⁸

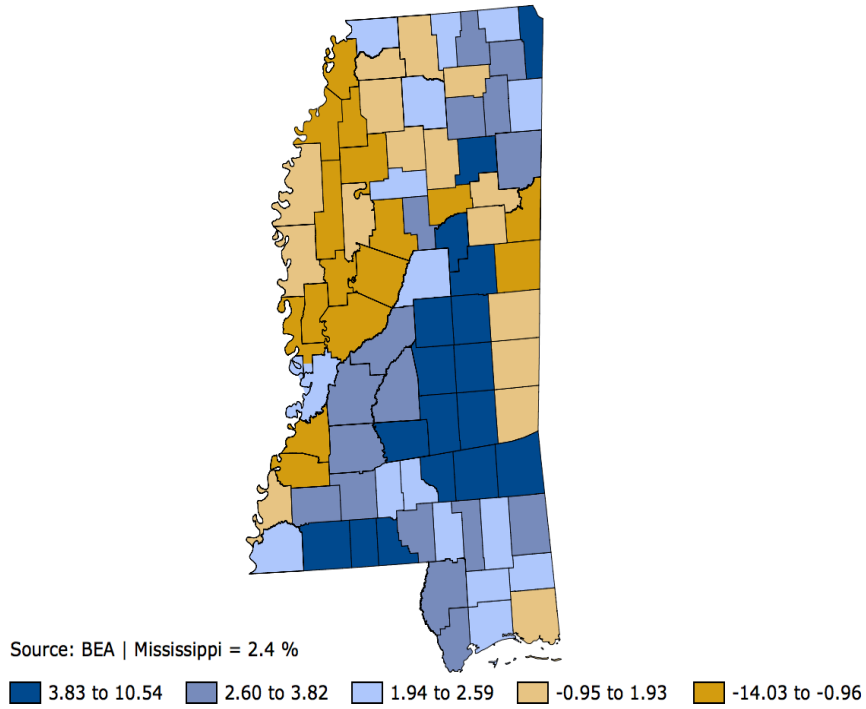
⁸ Retrieved from: <https://www.dor.ms.gov/taxareas/property/main.html>
<https://www.dor.ms.gov/docs/property1.pdf>

Summary of Findings

- Madison County has a current population of 104,673 with a 7.8% growth in the last 5 years
- The total number of jobs in the county is 54,134
- The average earnings are at \$51,840, which is 80% of the national average. This has to do with the top employers in the county being high salary jobs.
- Madison County's age population is very young. A quarter of the population is under 20 years of age and over half is under 40 years of age.
- Madison County has had 3.9% job growth over the last year, adding over 2,000 jobs. The state average is 1.6% and national average is 2% change over the last year, which are both below the county. The goal for communities should always be to try and be above the state average.
- Madison County's population growth rate is the highest among the 5 counties in the Jackson MSA.
- Population projections available indicate that the county's population will grow by 8,400 in the next 10 years, going from 103,252 in 2015 to 111,652 in 2025.
- Madison County's per capita income, according to the most recent Census in 2014, is \$58,604. That is also the highest per capita income in the state of Mississippi. Not only is the county of Madison the highest in the state, but the region surrounding the county, with Hinds and Rankin, is the top region, with per capita income. This is a direct reflection of high paying jobs and an educated workforce.
- The region of Madison, Rankin and Hinds has the largest labor force
- Manufacturing type employees in the county make up 7,605 out of 51,560
- 21,569 people both live and work in MC. 22,703 people commute into the county to go to work. This could be a reflection of the higher cost of living in Madison County compared to the surrounding areas, or the easy drive time throughout the region.
- 21,519 people live there and commute out for work. This could be a reflection on the high quality of life that the county offers, but there is not enough jobs within the county to support the demand, or again, it could be the easy commute throughout the region.
- According to the April 2016 Sales Tax by Industry numbers, Construction and Retail Trade are the industries with the highest grossing sales tax. Retail trade has been a top grossing industry for many years, this is no surprise and something to keep in mind recruitment wise
- The greatest challenge to a county with a youthful population and high population growth rates lies in dealing with the high number of new entrants to the job market each year. This means that new jobs must be created each year to absorb the increase in labor force.
- Regarding the Impact Scenario run, fifteen major projects were undertaken during the timeframe of 2015-2016 in which 13 projects invested \$35.94 million dollars in capital expenditures. The largest investments included \$12.2 million was invested by Tower Automotive and \$8.9 million by M-TEK.

Appendix A

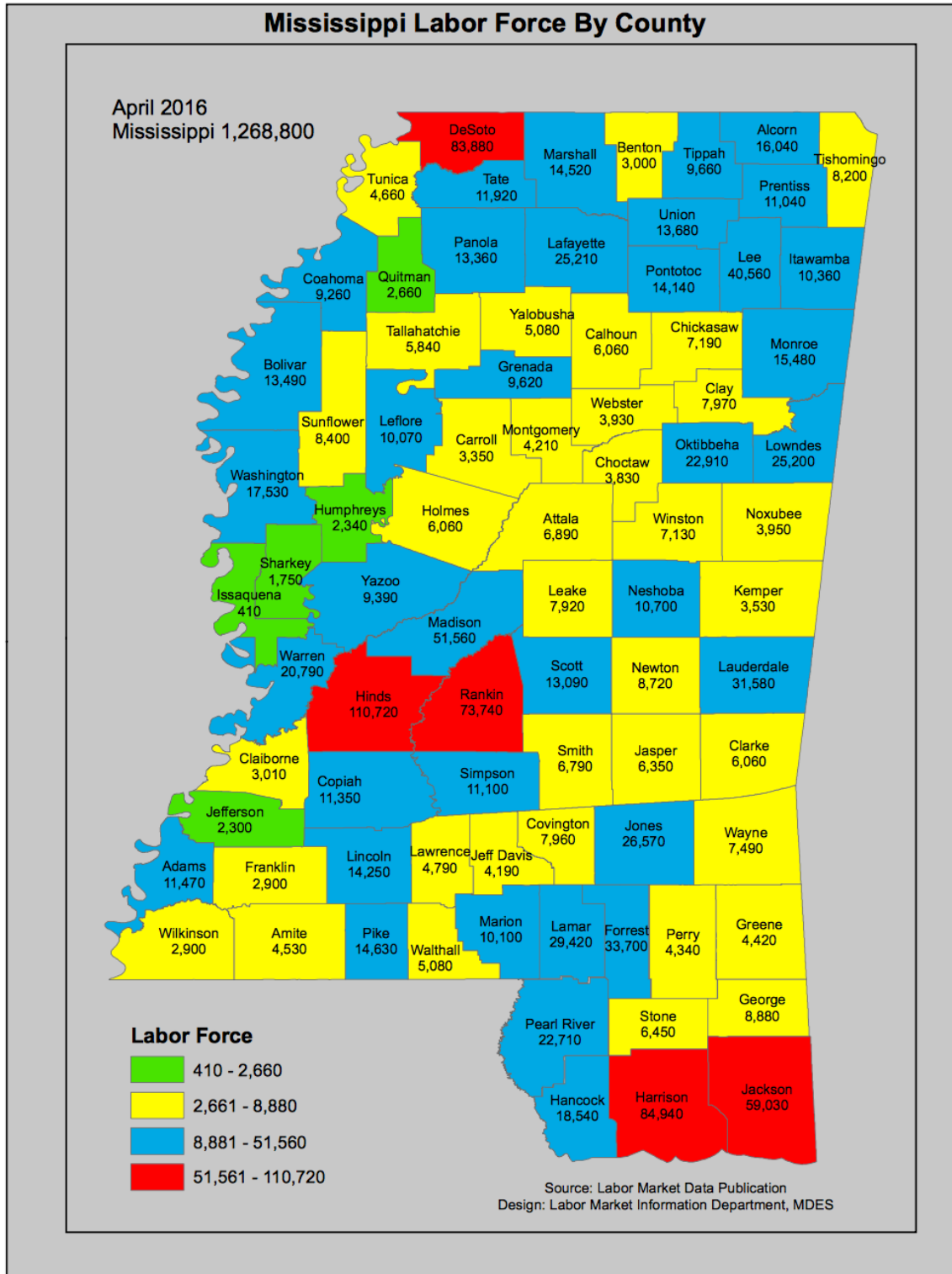
Map 1: Mississippi's Per Capita Personal Income 2013-2014
Mississippi, Per capita personal income, 2013 - 2014 Percent change from preceding period



Source: Bureau for Economic Analysis

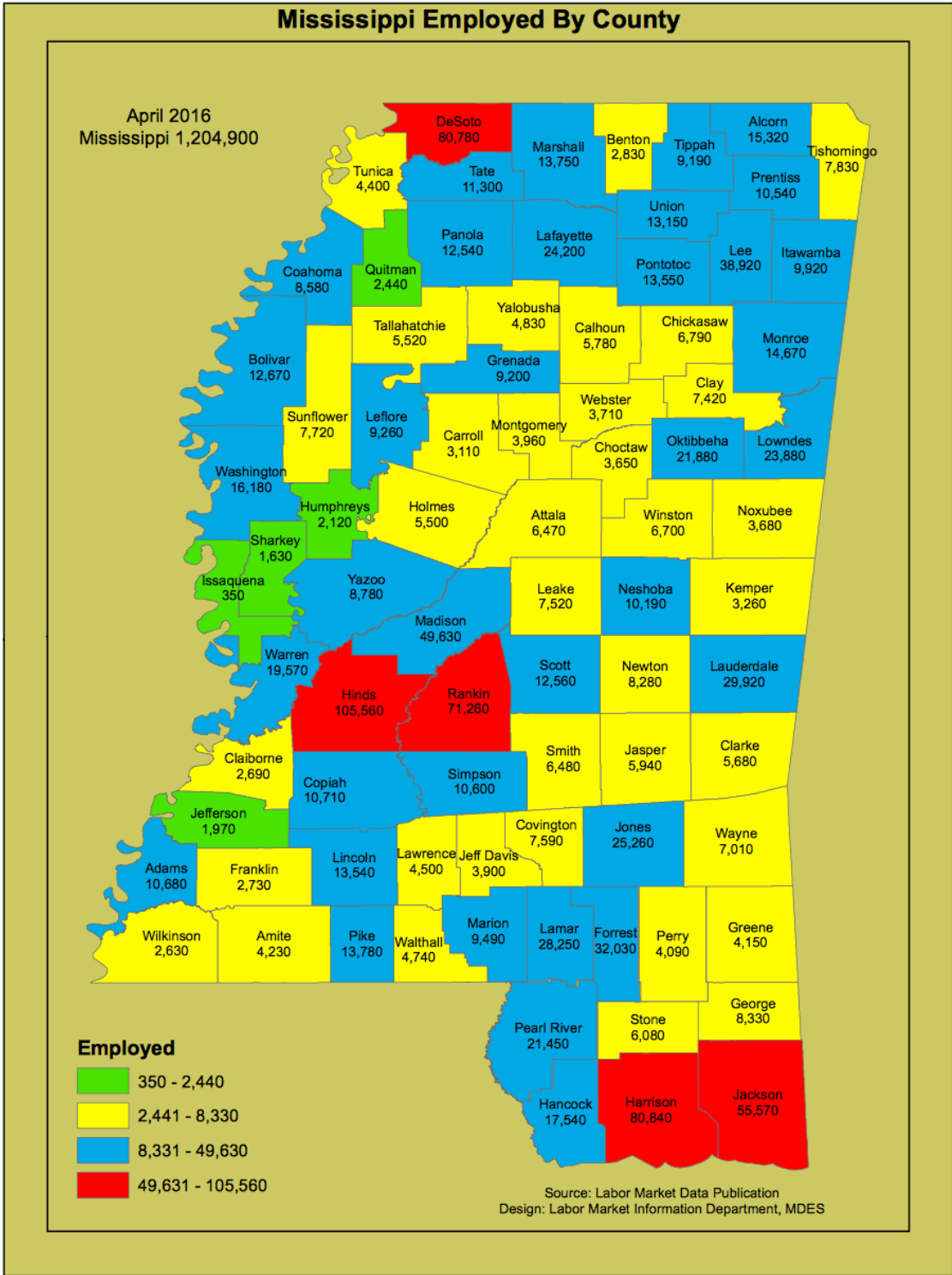
Madison County Report

Map 3: Mississippi's Labor Force By County April 2016



Source: Department of Employment Security

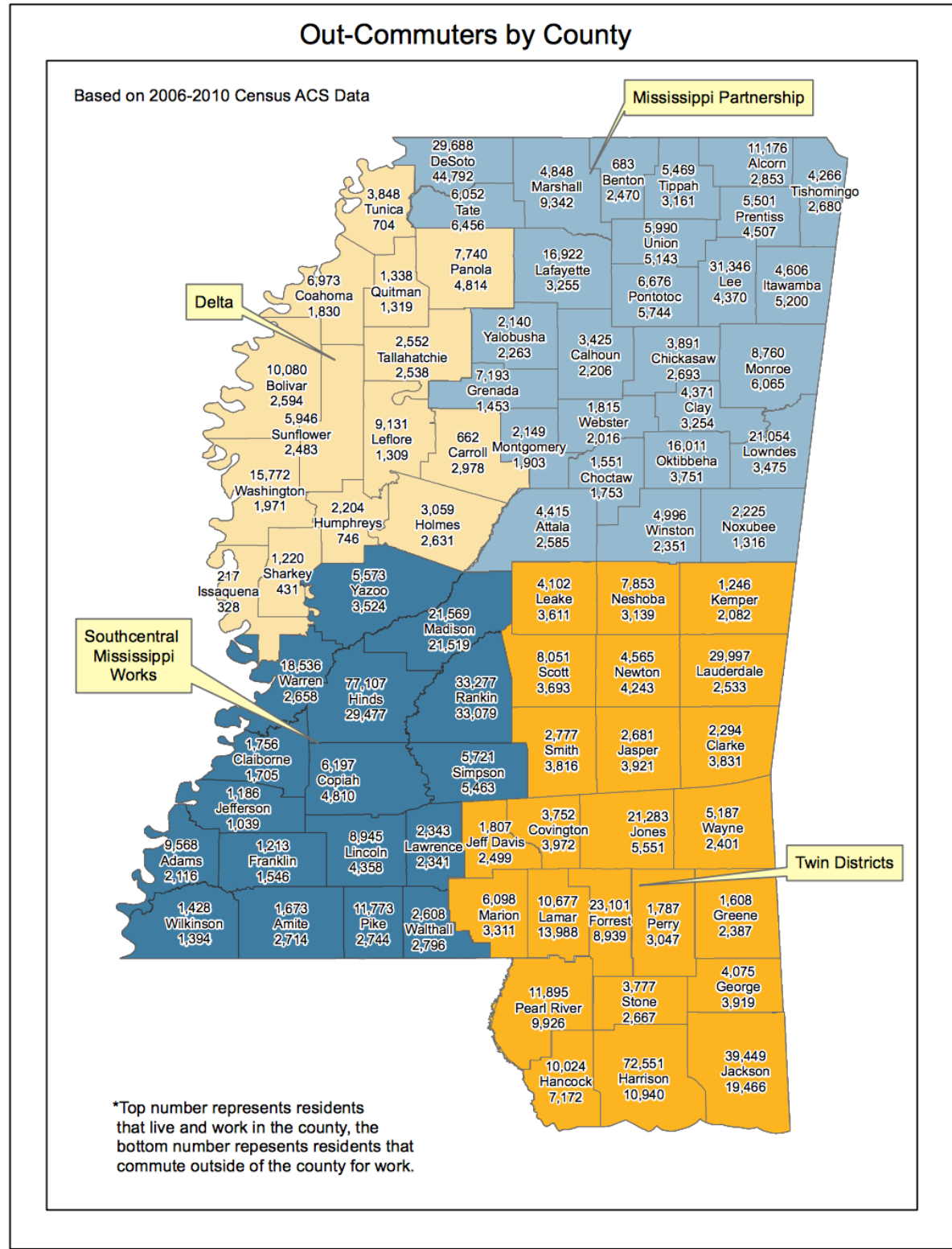
Map 5: Mississippi Employed by County



Source: Department of Employment Security

Madison County Report

Map 7: Out-Commuters by County



Source: Department of Employment Security

Appendix B

Table 5: Gross Sales by County Fiscal Year 2016 through April

County	Gross Sales	Deductions	Net Sales
OUT OF STATE	\$35,893,836,946	\$32,892,331,012	\$3,001,505,935
COUNTY NOT AVAILABLE	277,811,911	252,827,394	24,984,518
ADAMS	640,973,773	127,008,340	513,965,433
ALCORN	818,949,183	295,101,379	523,847,804
AMITE	78,516,018	23,583,375	54,932,643
ATTALA	324,967,099	157,391,876	167,575,222
BENTON	44,145,279	12,156,382	31,988,897
BOLIVAR	670,708,199	269,606,926	401,101,273
CALHOUN	159,885,636	65,909,350	93,976,285
CARROLL	36,947,664	10,859,488	26,088,176
CHICKASAW	179,981,207	55,712,278	124,268,929
CHOCTAW	85,399,746	45,835,095	39,564,650
CLAIBORNE	64,762,883	18,726,485	46,036,399
CLARKE	98,309,687	26,231,056	72,078,631
CLAY	307,630,607	94,802,526	212,828,080
COAHOMA	360,777,258	108,167,718	252,609,540
COPIAH	267,361,818	83,459,683	183,902,135
COVINGTON	264,651,144	90,484,800	174,166,344
DESOTO	7,193,705,544	4,410,827,458	2,782,878,086
FORREST	1,933,679,046	639,086,953	1,294,592,094
FRANKLIN	55,284,675	15,391,062	39,893,613
GEORGE	360,493,507	151,181,318	209,312,190
GREENE	67,714,868	29,382,786	38,332,082
GRENADA	722,210,375	337,846,031	384,364,344
HANCOCK	782,831,180	322,867,507	459,963,672
HARRISON	5,442,478,823	1,713,319,521	3,729,159,302
HINDS	8,105,722,427	2,663,568,302	5,442,154,125
HOLMES	141,098,374	61,511,372	79,587,002
HUMPHREYS	77,385,541	28,436,843	48,948,698
ISSAQUENA	3,851,745	1,149,004	2,702,741
ITAWAMBA	367,906,562	225,642,493	142,264,068
JACKSON	6,190,981,531	4,860,898,591	1,330,082,940
JASPER	131,817,756	32,677,254	99,140,502
JEFFERSON	42,416,457	7,957,142	34,459,315
JEFFERSON DAVIS	76,187,926	23,815,331	52,372,595
JONES	1,374,059,676	442,201,639	931,858,037

Madison County Report

KEMPER	183,438,457	13,235,299	170,203,158
LAFAYETTE	1,310,032,743	246,111,514	1,063,921,229
LAMAR	1,477,232,989	308,133,658	1,169,099,331
LAUDERDALE	2,124,997,031	893,178,098	1,231,818,933
LAWRENCE	122,909,618	67,716,691	55,192,927
LEAKE	192,823,415	43,377,022	149,446,394
LEE	4,201,589,264	1,124,826,856	3,076,762,408
LEFLORE	1,023,790,618	572,379,654	451,410,964
LINCOLN	1,056,482,912	543,690,999	512,791,913
LOWNDES	3,461,382,724	2,455,882,258	1,005,500,466
MADISON	5,121,071,254	3,089,429,024	2,031,642,230
MARION	405,099,446	110,779,771	294,319,675
MARSHALL	490,159,289	255,647,824	234,511,465
MONROE	600,144,259	332,193,388	267,950,871
MONTGOMERY	139,790,984	58,537,206	81,253,778
NESHOBA	906,386,123	560,594,259	345,791,864
NEWTON	180,198,023	42,282,971	137,915,052
NOXUBEE	179,534,517	114,666,992	64,867,525
OKTIBBEHA	950,929,844	199,287,587	751,642,256
PANOLA	702,717,374	252,186,153	450,531,221
PEARL RIVER	767,582,866	280,419,521	487,163,345
PERRY	77,883,263	21,781,588	56,101,675
PIKE	840,922,878	237,530,962	603,391,916
PONTOTOC	531,767,045	260,621,401	271,145,644
PRENTISS	308,429,290	143,028,701	165,400,588
QUITMAN	48,969,531	25,961,297	23,008,234
RANKIN	5,407,232,989	2,233,225,477	3,174,007,512
SCOTT	542,869,355	294,322,451	248,546,904
SHARKEY	65,390,949	26,207,474	39,183,476
SIMPSON	309,202,202	78,944,727	230,257,475
SMITH	99,604,897	17,521,507	82,083,390
STONE	291,373,653	123,264,041	168,109,612
SUNFLOWER	512,786,979	305,658,483	207,128,496
TALLAHATCHIE	101,788,810	49,223,275	52,565,535
TATE	357,371,809	150,117,874	207,253,936
TIPPAH	284,357,445	126,737,193	157,620,252
TISHOMINGO	303,633,574	168,181,824	135,451,750
TUNICA	269,500,974	75,487,188	194,013,786
UNION	790,408,096	485,753,396	304,654,701
WALTHALL	145,551,080	89,212,366	56,338,715
WARREN	1,148,767,965	419,246,319	729,521,646

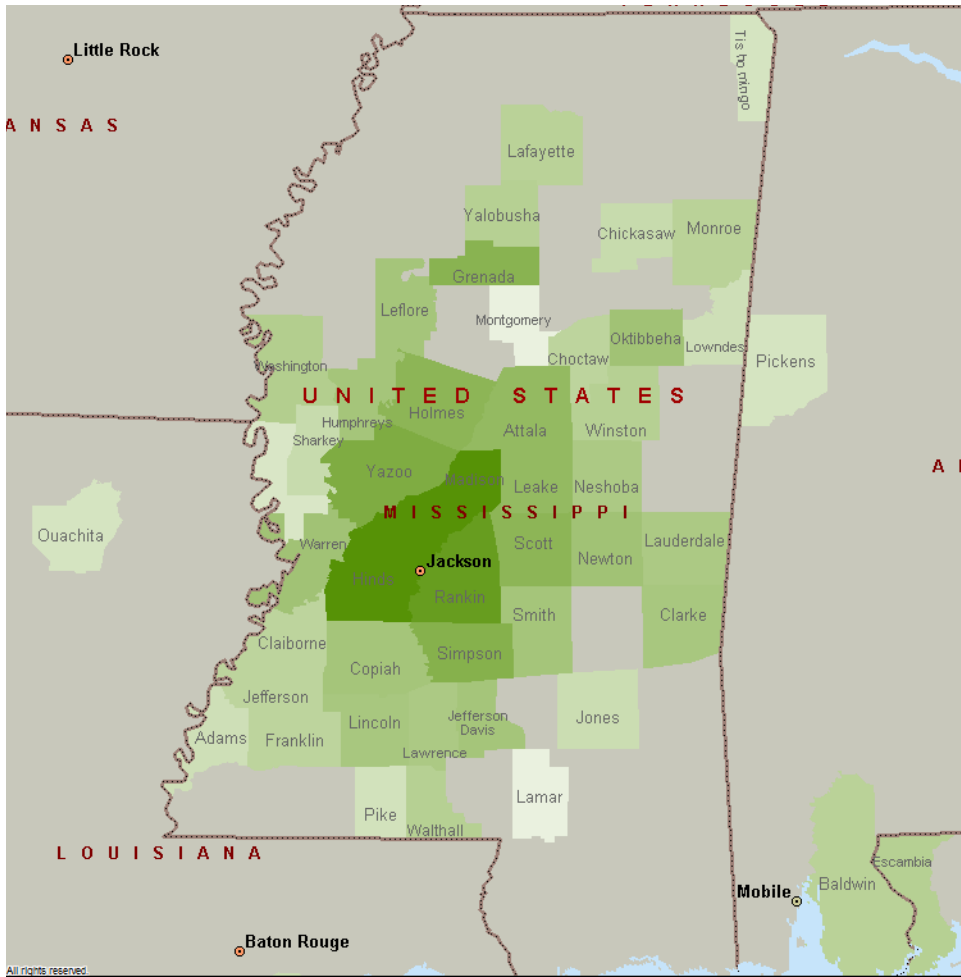
Madison County Report

WASHINGTON		971,431,044		322,248,788		649,182,257
WAYNE		266,117,292		91,292,078		174,825,214
WEBSTER		70,971,020		21,673,754		49,297,266
WILKINSON		95,225,626		41,520,304		53,705,321
WINSTON		324,000,643		132,895,361		191,105,283
YALOBUSHA		96,202,524		44,624,382		51,578,142
YAZOO		350,806,178		138,854,966		211,951,212
STATEWIDE		0		0		0
Total for State		\$113,856,302,934		\$68,287,649,691		

Source: Department of Revenue

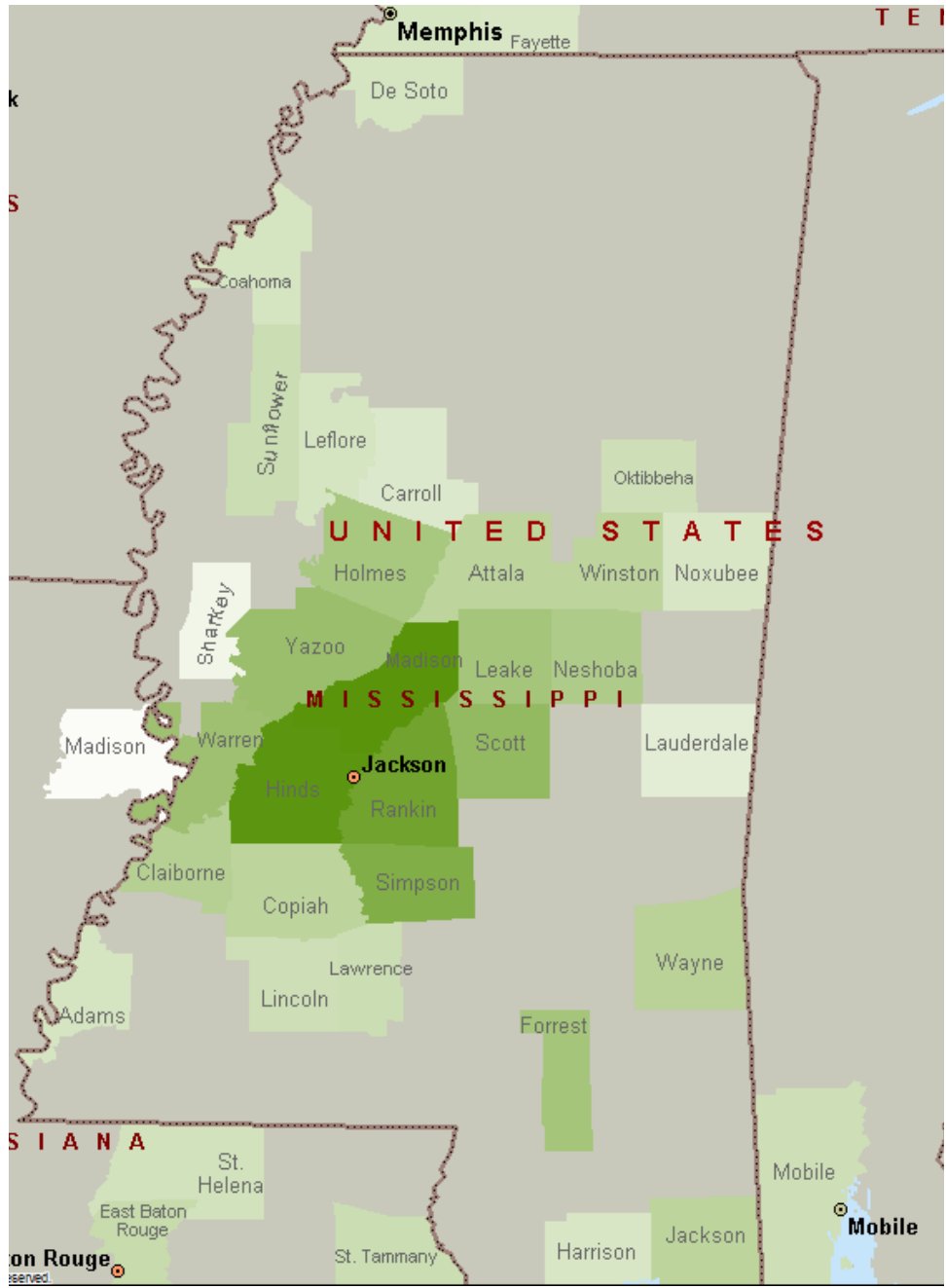
Appendix C

Map 8: Madison County Citizens Place of Work



Madison County Report

Map 9: Where Workers in Madison County are Commuting from



Madison County Report

Table 6: Residence of Madison County Commuting to Work Sorted by Residence

Residence County to Workplace County Flows for the United States and Puerto Rico Sorted by Residence Geography: 2006-2010									
For more information on sampling and estimation methods, confidentiality protection, and sampling and nonsampling errors, see < www.census.gov/acs/www/Downloads/data_documentation/Accuracy/MultiyearACSAccuracyofData2010.pdf >.									
Residence		Workplace		Number	MOE	Residence		Workplace	
State FIPS Code	County FIPS Code	State/U.S. Island Area/Foreign Country Code	County FIPS Code			State	County	State/U.S. Island Area/Foreign Country	County
28	089	028	089	21,569	948	Mississippi	Madison County	Mississippi	Madison County
28	089	028	049	15,281	778	Mississippi	Madison County	Mississippi	Hinds County
28	089	028	121	3,957	422	Mississippi	Madison County	Mississippi	Rankin County
28	089	028	163	287	118	Mississippi	Madison County	Mississippi	Yazoo County
28	089	028	123	275	139	Mississippi	Madison County	Mississippi	Scott County
28	089	028	127	225	249	Mississippi	Madison County	Mississippi	Simpson County
28	089	028	149	191	111	Mississippi	Madison County	Mississippi	Warren County
28	089	028	079	124	94	Mississippi	Madison County	Mississippi	Leake County
28	089	028	051	87	79	Mississippi	Madison County	Mississippi	Holmes County
28	089	029	189	85	124	Mississippi	Madison County	Missouri	St. Louis County
28	089	028	099	82	67	Mississippi	Madison County	Mississippi	Neshoba County
28	089	028	035	74	95	Mississippi	Madison County	Mississippi	Forrest County
28	089	028	153	68	51	Mississippi	Madison County	Mississippi	Wayne County
28	089	017	031	53	48	Mississippi	Madison County	Illinois	Cook County
28	089	028	029	39	39	Mississippi	Madison County	Mississippi	Copiah County
28	089	028	021	38	54	Mississippi	Madison County	Mississippi	Claiborne County
28	089	028	159	28	38	Mississippi	Madison County	Mississippi	Winston County
28	089	022	103	26	29	Mississippi	Madison County	Louisiana	St. Tammany Parish
28	089	028	059	26	40	Mississippi	Madison County	Mississippi	Jackson County
28	089	028	077	25	28	Mississippi	Madison County	Mississippi	Lawrence County
28	089	001	097	23	27	Mississippi	Madison County	Alabama	Mobile County
28	089	022	033	23	31	Mississippi	Madison County	Louisiana	East Baton Rouge Parish
28	089	022	051	23	27	Mississippi	Madison County	Louisiana	Jefferson Parish
28	089	028	105	23	25	Mississippi	Madison County	Mississippi	Oktibbeha County
28	089	048	201	22	26	Mississippi	Madison County	Texas	Harris County
28	089	028	007	21	38	Mississippi	Madison County	Mississippi	Attala County
28	089	028	133	20	30	Mississippi	Madison County	Mississippi	Sunflower County
28	089	026	163	19	33	Mississippi	Madison County	Michigan	Wayne County
28	089	028	033	19	22	Mississippi	Madison County	Mississippi	DeSoto County
28	089	028	085	19	26	Mississippi	Madison County	Mississippi	Lincoln County
28	089	022	037	15	24	Mississippi	Madison County	Louisiana	East Feliciana Parish
28	089	022	091	15	24	Mississippi	Madison County	Louisiana	St. Helena Parish
28	089	027	063	14	23	Mississippi	Madison County	Minnesota	Jackson County
28	089	028	083	14	20	Mississippi	Madison County	Mississippi	Leflore County
28	089	047	157	14	21	Mississippi	Madison County	Tennessee	Shelby County
28	089	012	057	13	21	Mississippi	Madison County	Florida	Hillsborough County
28	089	013	121	13	20	Mississippi	Madison County	Georgia	Fulton County
28	089	028	027	13	21	Mississippi	Madison County	Mississippi	Coahoma County
28	089	047	047	13	19	Mississippi	Madison County	Tennessee	Fayette County
28	089	301	000	13	20	Mississippi	Madison County	Canada	
28	089	028	001	12	20	Mississippi	Madison County	Mississippi	Adams County
28	089	028	103	12	19	Mississippi	Madison County	Mississippi	Noxubee County
28	089	047	037	12	21	Mississippi	Madison County	Tennessee	Davidson County
28	089	048	303	12	19	Mississippi	Madison County	Texas	Lubbock County
28	089	051	059	12	18	Mississippi	Madison County	Virginia	Fairfax County
28	089	012	091	11	18	Mississippi	Madison County	Florida	Okaloosa County
28	089	028	047	11	18	Mississippi	Madison County	Mississippi	Harrison County
28	089	040	109	11	17	Mississippi	Madison County	Oklahoma	Oklahoma County

Madison County Report

28	089	012	073	10	15	Mississippi	Madison County	Florida	Leon County
28	089	028	015	10	17	Mississippi	Madison County	Mississippi	Carroll County
28	089	555	000	10	16	Mississippi	Madison County	Abroad, not specified	
28	089	022	095	9	14	Mississippi	Madison County	Louisiana	St. John the Baptist Parish
28	089	027	089	9	16	Mississippi	Madison County	Minnesota	Marshall County
28	089	028	075	9	14	Mississippi	Madison County	Mississippi	Lauderdale County
28	089	048	029	9	15	Mississippi	Madison County	Texas	Bexar County
28	089	048	183	9	15	Mississippi	Madison County	Texas	Gregg County
28	089	012	011	8	13	Mississippi	Madison County	Florida	Broward County
28	089	008	097	7	13	Mississippi	Madison County	Colorado	Pitkin County
28	089	028	125	5	9	Mississippi	Madison County	Mississippi	Sharkey County
28	089	022	065	4	7	Mississippi	Madison County	Louisiana	Madison Parish
28	089	029	031	4	8	Mississippi	Madison County	Missouri	Cape Girardeau County
28	089	022	071	3	6	Mississippi	Madison County	Louisiana	Orleans Parish

Table 7: Residence of Madison County Commuting to Work Sorted by Workplace

Residence County to Workplace County Flows for the United States and Puerto Rico Sorted by Workplace Geography: 2006-2010									
For more information on sampling and estimation methods, confidentiality protection, and sampling and nonsampling errors, see < www.census.gov/acs/www/Downloads/data_documentation/Accuracy/MultiyearACSAccuracyofData2010.pdf >.									
Residence		Workplace		Number	MOE	Residence		Workplace	
State FIPS Code	County FIPS Code	State/U.S. Island Area/Foreign Country Code	County FIPS Code			State	County	State/U.S. Island Area/Foreign Country	County
28	089	028	089	21,569	948	Mississippi	Madison County	Mississippi	Madison County
28	049	028	089	11,390	972	Mississippi	Hinds County	Mississippi	Madison County
28	121	028	089	6,228	565	Mississippi	Rankin County	Mississippi	Madison County
28	163	028	089	1,200	271	Mississippi	Yazoo County	Mississippi	Madison County
28	051	028	089	642	162	Mississippi	Holmes County	Mississippi	Madison County
28	127	028	089	388	198	Mississippi	Simpson County	Mississippi	Madison County
28	123	028	089	369	158	Mississippi	Scott County	Mississippi	Madison County
28	079	028	089	367	124	Mississippi	Leake County	Mississippi	Madison County
28	007	028	089	195	123	Mississippi	Attala County	Mississippi	Madison County
28	043	028	089	173	176	Mississippi	Grenada County	Mississippi	Madison County
28	029	028	089	149	78	Mississippi	Copiah County	Mississippi	Madison County
28	149	028	089	123	84	Mississippi	Warren County	Mississippi	Madison County
28	101	028	089	98	86	Mississippi	Newton County	Mississippi	Madison County
28	099	028	089	86	63	Mississippi	Neshoba County	Mississippi	Madison County
28	129	028	089	83	73	Mississippi	Smith County	Mississippi	Madison County
28	105	028	089	82	88	Mississippi	Oktibbeha County	Mississippi	Madison County
28	053	028	089	78	77	Mississippi	Humphreys County	Mississippi	Madison County
28	065	028	089	68	77	Mississippi	Jefferson Davis County	Mississippi	Madison County
28	083	028	089	67	75	Mississippi	Leflore County	Mississippi	Madison County
28	085	028	089	64	67	Mississippi	Lincoln County	Mississippi	Madison County
28	077	028	089	58	61	Mississippi	Lawrence County	Mississippi	Madison County
28	075	028	089	55	62	Mississippi	Lauderdale County	Mississippi	Madison County
28	023	028	089	53	65	Mississippi	Clarke County	Mississippi	Madison County
28	151	028	089	43	47	Mississippi	Washington County	Mississippi	Madison County
01	003	028	089	41	39	Alabama	Baldwin County	Mississippi	Madison County
13	135	028	089	37	37	Georgia	Gwinnett County	Mississippi	Madison County
26	163	028	089	37	39	Michigan	Wayne County	Mississippi	Madison County
12	033	028	089	35	41	Florida	Escambia County	Mississippi	Madison County
28	071	028	089	32	37	Mississippi	Lafayette County	Mississippi	Madison County

Madison County Report

28	019	028	089	30	31	Mississippi	Choctaw County	Mississippi	Madison County
28	159	028	089	30	43	Mississippi	Winston County	Mississippi	Madison County
28	147	028	089	28	45	Mississippi	Walthall County	Mississippi	Madison County
12	089	028	089	27	51	Florida	Nassau County	Mississippi	Madison County
28	095	028	089	27	39	Mississippi	Monroe County	Mississippi	Madison County
28	161	028	089	26	41	Mississippi	Yalobusha County	Mississippi	Madison County
28	021	028	089	19	29	Mississippi	Claiborne County	Mississippi	Madison County
28	037	028	089	19	36	Mississippi	Franklin County	Mississippi	Madison County
28	087	028	089	19	20	Mississippi	Lowndes County	Mississippi	Madison County
28	125	028	089	19	24	Mississippi	Sharkey County	Mississippi	Madison County
28	063	028	089	15	29	Mississippi	Jefferson County	Mississippi	Madison County
28	017	028	089	14	24	Mississippi	Chickasaw County	Mississippi	Madison County
28	067	028	089	14	22	Mississippi	Jones County	Mississippi	Madison County
39	151	028	089	14	22	Ohio	Stark County	Mississippi	Madison County
22	005	028	089	13	22	Louisiana	Ascension Parish	Mississippi	Madison County
28	001	028	089	13	19	Mississippi	Adams County	Mississippi	Madison County
28	055	028	089	13	14	Mississippi	Issaquena County	Mississippi	Madison County
40	135	028	089	13	20	Oklahoma	Sequoyah County	Mississippi	Madison County
48	139	028	089	12	19	Texas	Ellis County	Mississippi	Madison County
51	069	028	089	12	19	Virginia	Frederick County	Mississippi	Madison County
28	113	028	089	11	18	Mississippi	Pike County	Mississippi	Madison County
01	107	028	089	10	15	Alabama	Pickens County	Mississippi	Madison County
13	051	028	089	10	15	Georgia	Chatham County	Mississippi	Madison County
22	073	028	089	10	15	Louisiana	Ouachita Parish	Mississippi	Madison County
22	051	028	089	9	14	Louisiana	Jefferson Parish	Mississippi	Madison County
28	141	028	089	9	16	Mississippi	Tishomingo County	Mississippi	Madison County
21	111	028	089	8	11	Kentucky	Jefferson County	Mississippi	Madison County
26	125	028	089	8	13	Michigan	Oakland County	Mississippi	Madison County
28	073	028	089	4	7	Mississippi	Lamar County	Mississippi	Madison County
01	069	028	089	3	4	Alabama	Houston County	Mississippi	Madison County
28	097	028	089	3	7	Mississippi	Montgomery County	Mississippi	Madison County